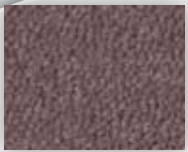
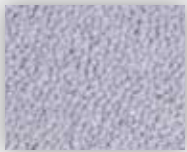




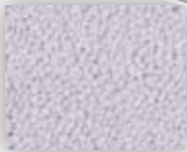
ZEN



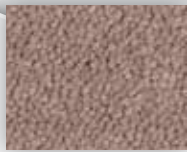
▲ SB/FS: ZEN.014



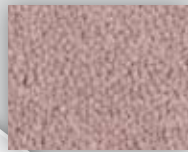
▲ SB/FS: ZEN.034



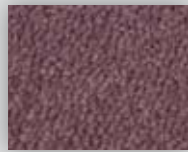
▲ SB/FS: ZEN.044



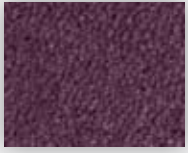
▲ SB/FS: ZEN.054



▲ SB/FS: ZEN.064



▲ SB/FS: ZEN.074



▲ SB/FS: ZEN.084



▲ SB/FS: ZEN.109



▲ SB/FS: ZEN.110



▲ SB/FS: ZEN.124



▲ SB/FS: ZEN.134



▲ SB/FS: ZEN.164



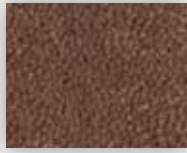
▲ SB/FS: ZEN.184



▲ SB/FS: ZEN.194



▲ SB/FS: ZEN.204



▲ SB/FS: ZEN.214



▲ SB/FS: ZEN.280



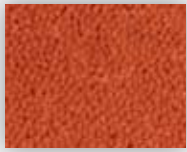
▲ SB/FS: ZEN.294



▲ SB/FS: ZEN.304



▲ SB/FS: ZEN.314



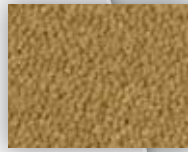
▲ SB/FS: ZEN.334



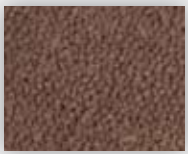
▲ SB/FS: ZEN.344



▲ SB/FS: ZEN.354



▲ SB/FS: ZEN.394



▲ SB/FS: ZEN.423



▲ SB/FS: ZEN.434



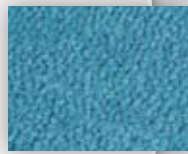
▲ SB/FS: ZEN.544



▲ SB/FS: ZEN.624



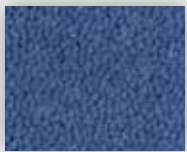
▲ SB/FS: ZEN.714



▲ SB/FS: ZEN.734



▲ SB/FS: ZEN.764



▲ SB/FS: ZEN.774



▲ SB/FS: ZEN.783



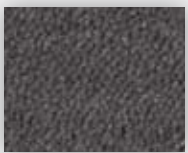
▲ SB/FS: ZEN.790



▲ SB/FS: ZEN.800



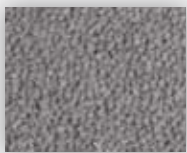
▲ SB/FS: ZEN.810



▲ SB/FS: ZEN.820



▲ SB/FS: ZEN.830



▲ SB/FS: ZEN.840



▲ SB/FS: ZEN.850

lano carpets for hospitality

Fabricagemetode Technique de fabrication Manufacturing process Herstellungsart Tecnica di fabbricazione	tufted, 1/10" saxony	Poolsamenstelling Nature du velours Pile composition Polmaterial Composizione pelo	PA	Tuftdoek Premier dossier Primary backing Trägermaterial Tela di supporto	non woven	Rugtype Envers Secondary backing Rücken Fondo	SB/FS
Totale dikte Hauteur totale Total height Gesamthöhe Altezza totale	± 8,5 mm	Nuttige poolhoogte Hauteur de velours utile Effective pile height Tatsächliche Florhöhe Altezza pelo utile	± 6,0 mm	Breedte Largeur Width Breite Larghezza	± 400 cm	Aantal noppen/m ² Nombre de points/m ² Number of knots/sqm Noppenzahl/m ² Numero di punti/mq	± 200940
Poolinzetgewicht/m ² Poids mis en oeuvre/m ² Pile weight/sqm Poleinsatzgewicht/m ² Peso felpa/mq	± 1000 gr	Totaal gewicht/m ² Poids total/m ² Total weight/sqm Poleinsatzgewicht/m ² Peso felpa/mq	± 2160 gr	EN 13501-1 Brandgedrag Comportement au feu Fire behaviour Brennverhalten Reazione al fuoco	B_{fi}-s1	EN 1307-2004 Classificatie Classification Classificazione Klassifizierung Classificazione	Class 33 Commercial Heavy
ISO 140/8 1997 Contactgeluidsisolatie Isolation aux bruits d'impact Impact sound insulation Trittschallverbesserungsmaß Riduzione rumore d'urto	± 28 dB	ISO 354 Geluidsdempingsvermogen α_s Absorption phonique α_s Sound absorption α_s Schallabsorptionsgrad α_s Grado d'assortimento acustico α_s	± 0,30 1000 Hz	ISO 11654 Geluidsdempingsvermogen α_w Absorption phonique α_w Sound absorption α_w Schallabsorptionsgrad α_w Grado d'assortimento acustico α_w	± 0,25	DIN 52612 Warmtedoorlaatweerstand Résistivité thermique Thermal retention Wärmedurchlaßwiderstand Resistenza termica	± 0,052 m²/kW
TOG rating	± 0,52	ISO 6356 2000 Teil 2: Permanent antistatisch Antistatique permanent Permanently antistatic Permanent antistatisch Antistatico permanente	< 2 kv	ISO 6356 2000 Teil 6: Oppervlakteweerstand RoT Résistance horizontale RoT Surface resistance RoT Oberflächenwiderstand RoT Resistenza in superficie Rot	≤ 10⁹ Ω	ISO 10965 1999 Teil 6: Doorgangsweerstand RdT Résistance transversale RdT Vertical resistance RdT Durchgangswiderstand RdT Resistenza ai passaggi RdT	≤ 10⁹ Ω
ISO 105 B02 2000 Lichtechtheid Solidité à la lumière Lightfastness Lichtechtheid Solidità colori alla luce	≥ 5-6	ISO 105 E01 2002 Waterechtheid verkleuring Solidité à l'eau changement couleur Waterfastness change in colour Wasserechtheit Änderung der Farbe Solidità colori all'acqua cambio colore	≥ 4	ISO 105 E01 2002 Waterechtheid uitbloeding Solidité à l'eau dégorgement Waterfastness staining Wasserechtheit anbluten Solidità colori all'acqua sfumatura colore	≥ 3-4	ISO 105 X12 2001 Wrijftechtheid droog Solidité au frottement sec Rubbingfastness dry Reibungechtheit trocken Solidità colori allo sfregamento a secco	≥ 4
ISO 105 X12 2001 Wrijftechtheid nat Solidité au frottement humide Rubbingfastness wet Reibungechtheit nass Solidità colori allo sfregamento a umido	≥ 4	Ce produit s'inscrit dans la démarche HQE (F.D.E.S. selon la norme NF P01-10 disponible sur demande). F.D.E.S. = fiche de données environnementales et sanitaires.	HQE	(±) These details are approximate. Complete specification details and associated certificates together with tolerances applying to the above can be provided upon request. We reserve the right to improve technical specifications without prior notice. Due to method of manufacture perfect pattern and/or colour matching cannot be guaranteed. In cut-pile carpeting, in rare cases, shading/pile reversal may occur without affecting its fitness for use. Shading/pile reversal can not be considered as a manufacturing or a material defect and will not affect the durability of the carpet. For other languages see: www.lano.com			

U₃P₃E₁C₀ 04/052



Lano
 Zuidstraat 44
 8530 Harelbeke-Belgium
 t +32-56-65 40 00
 f +32-56-65 40 09
 marketing@lano.be
 www.lano.com

