

SUITE CONCEPT

CUSTOM MADE TUFTED GRAPHICS

By Lamo



SUITE

NL

Suite is een hoogwaardig getufte kwaliteit geschikt voor diverse toepassingen. Het duurzame 2-ply garen (80% wol en 20% polyamide) beantwoordt aan al uw eisen en zorgt voor een extra dimensie in comfort en uitstraling.

FR

Suite est une qualité tuftée graphique haut de gamme idéale pour diverses applications. La résistance du fil 2 bouts (80% laine et 20% polyamide) satisfait à toutes vos exigences et apporte une réponse en confort et durabilité.

E

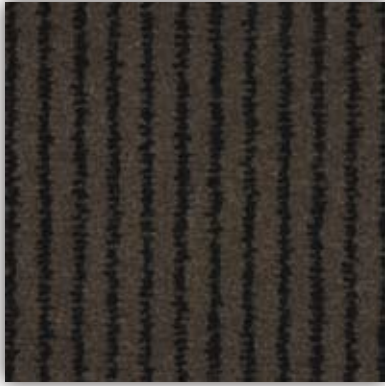
Suite is a tufted range aimed at various high-end applications. A durable 2-ply yarn (80% wool - 20% polyamide) will meet your performance requirements and adds underfoot comfort.

D

Suite ist eine hochwertige Tuftqualität für verschiedene Einsatzbereiche geeignet. Das strapazierfähige 2-ply Garn aus 80% Wolle und 20% Polyamid entspricht allen Ihren Anforderungen und sorgt für aussergewöhnlichen Komfort und Ausstrahlung.

IT

Suite è una prestigiosa collezione tufted adatta a diverse applicazioni. Il suo filato a due capi (80% lana - 20% nylon) soddisfa le più svariate esigenze in termini di resistenza all'usura e comfort.



SU1.271



SU1.211



SU1.801



SU1.261



SU1.241



SU1.101



SUITE STANDARD STOCK

NL

Suite 1 (SU1) is in 6 kleuren leverbaar uit stock op rol en afsnijding.
(poolgewicht $\pm 1100 \text{ gr/m}^2$ - 4 m breed)

FR

Suite 1 (SU1) est disponible de stock en 6 couleurs en rouleau et découpage
(poids de velours $\pm 1100 \text{ gr/m}^2$ - 4 m largeur)

E

Suite 1 (SU1) is available in 6 colours from stock in both rolls or lengths
(pile weight $\pm 1100 \text{ gms/sqm}$ - 4 m wide)

D

Suite 1 (SU1) ist in 6 Farben aus Vorrat lieferbar sowohl in Rolle als auch im Kupon.
(Poleinsatzgewicht $\pm 1100 \text{ g/m}^2$ - 4 m Breite)

IT

Suite 1 (SU1) è disponibile a magazzino in 6 varianti di colore anche con servizio taglio
(peso filato $\pm 1100 \text{ g/m}^2$ - altezza 4 m)



From 400 m²



SUITE CONCEPT

NL

Ontwerpen op maat is mogelijk met het Suite Concept. Aanpassingen van een design aan uw kleurwensen en poolgewicht zorgen voor een uniek tapijt.

Voor projecten vanaf 400 m²

Design: COC referentienummer uit bijgaande brochure

Per Design: kleurkeuze: max 4 kleuren

Kleuropgave uit: pombox Lano, RAL kleuren, NCS kleuren, Pantone kleuren, ...

Poolgewichten: ± 1100 gr/m²; ± 1300 gr/m²; ± 1500 gr/m²

FR

Les projets sur mesure sont possibles avec le Suite Concept. Adaptations du dessin suivant vos souhaits de couleurs et de poids de velours pour avoir un tapis unique.

Pour les projets à partir de 400 m²

Dessin: COC numéro de référence de la brochure

Par dessin: choix de couleurs: 4 couleurs maximum

Sélection des couleurs à partir de la Pombox Lano, couleurs RAL, couleurs NCS, couleurs Pantone, ...

Poids de velours: ± 1100 gr/m²; ± 1300 gr/m²; ± 1500 gr/m²

E

Design can be created with the Suite concept.

Design, colour & pile weight can be altered for a unique carpet.

For projects over 400 sqm

Design: COC reference number from the options hereafter

Colour choice: max 4 colours per design

Colour indication: using Lano's pom box, RAL/NCS/Pantone/etc.

Pile weights: ± 1100; ± 1300; ± 1500 gms/sqm constructions

D

Sonderanfertigungen sind im Suite Concept ebenfalls möglich. Anpassungen eines Dessins an Ihre Farbwünsche und Auswahl aus drei Poleinsatzgewichten sorgen für einen individuellen Bodenbelag.

Für Projekte ab 400 m²

Dessin: COC Referenznummer aus der Broschüre

Pro Dessin: Farbwahl von maximal 4 Farben

Farbauswahl: aus der Pombox Lano, RAL Farben, NCS Farben, Pantone Farben, ...

Polgewichte: ± 1100 g/m²; ± 1300 g/m²; ± 1500 g/m²

IT

Ogni moquette può essere progettata individualmente con Suite concept.

Disegno, colore e peso del filato possono essere modificati per

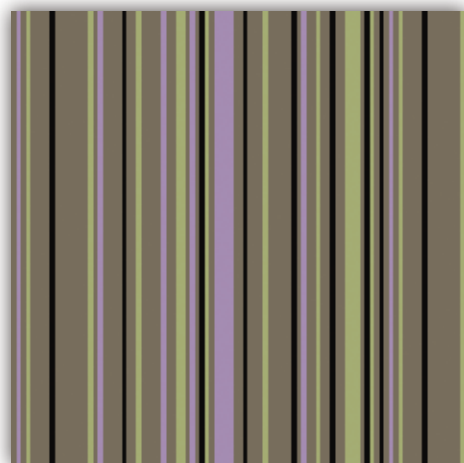
progetti superiori a 400 m²

Disegno: referenza COC nella brochure allegata

Numero colori: max 4 colori per disegno

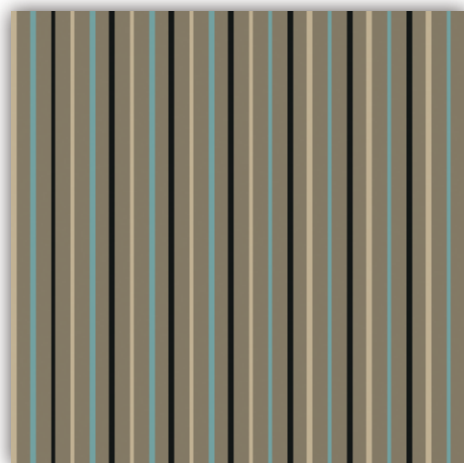
Selezione colori: pom box Lano, Ral/NCS/Pantone

Pesi filato: ± 1100 g/m²; ± 1300 g/m²; ± 1500 g/m²



COC 64

R= ▶ 24,6 cm x ▲ 0,0 cm



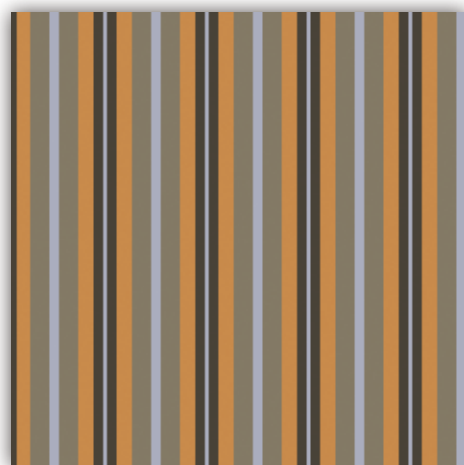
COC 95

R= ▶ 3,8 cm x ▲ 0,0 cm



COC 63

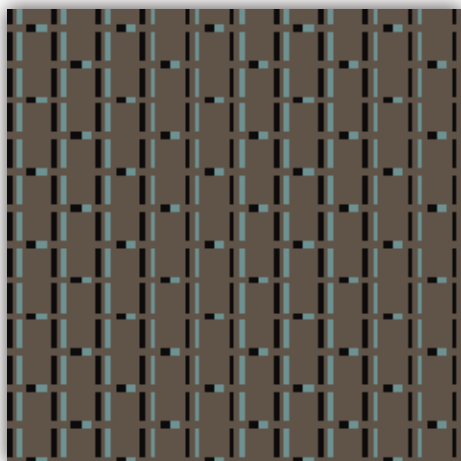
R= ▶ 24,6 cm x ▲ 0,0 cm



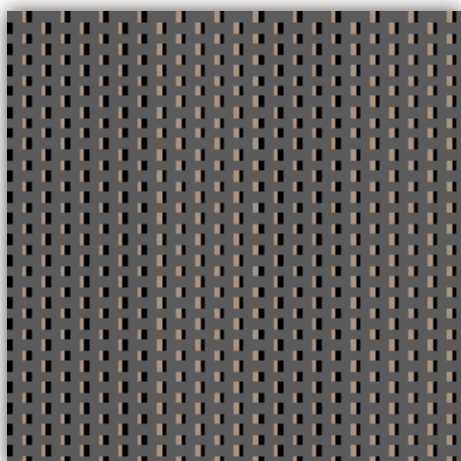
COC 65

R= ▶ 6,7 cm x ▲ 0,0 cm

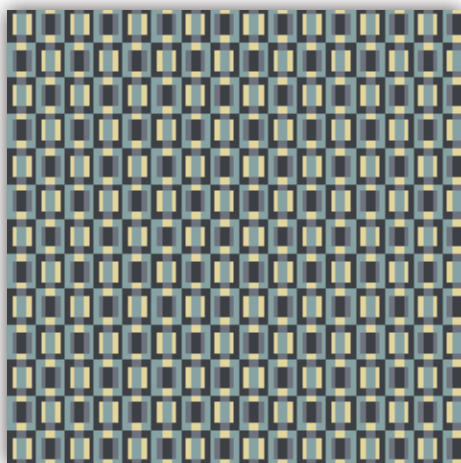




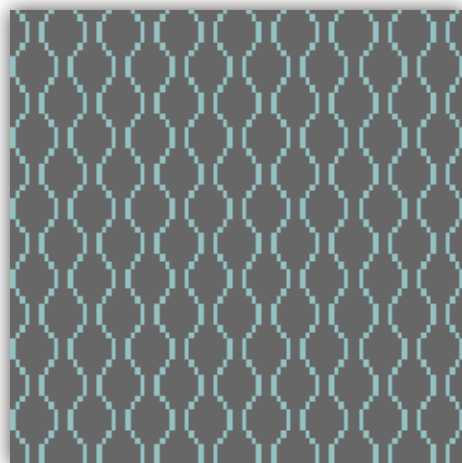
COC 40
R= ▶ 4,5 cm x ▲ 7,3 cm



COC 7
R= ▶ 2,6 cm x ▲ 2,9 cm

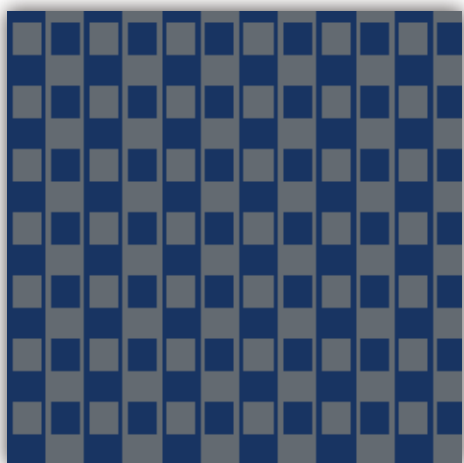


COC 130
R= ▶ 3,8 cm x ▲ 4,8 cm

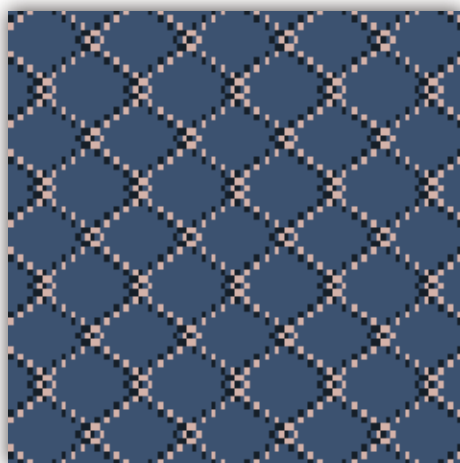


COC 132
R= ▶ 3,8 cm x ▲ 4,9 cm

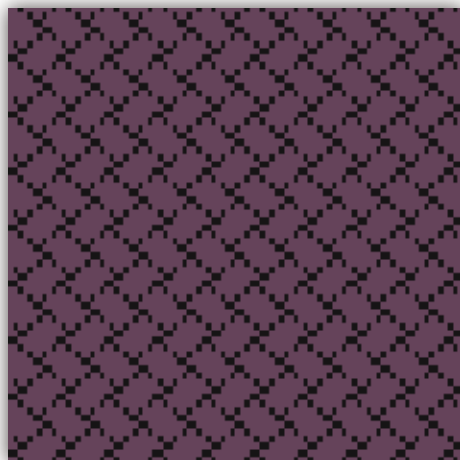




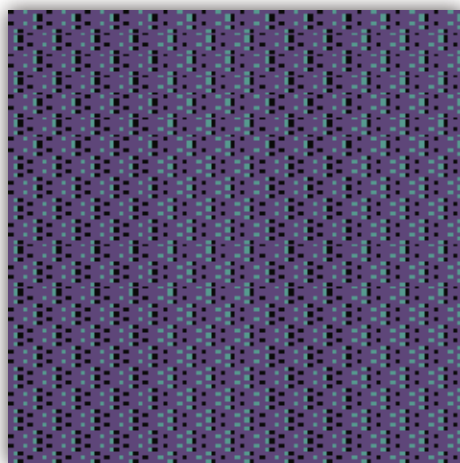
COC 128
R= ▶ 5,1 cm x ▲ 4,4 cm



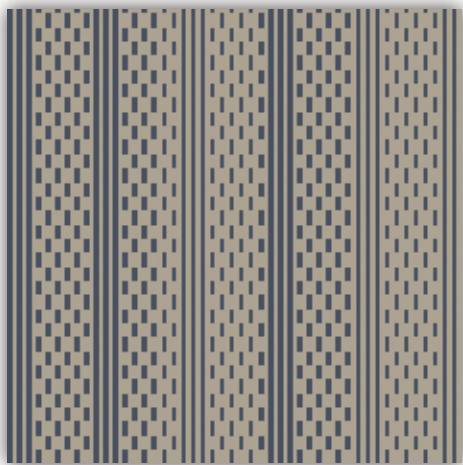
COC 68
R= ▶ 6,4 cm x ▲ 6,8 cm



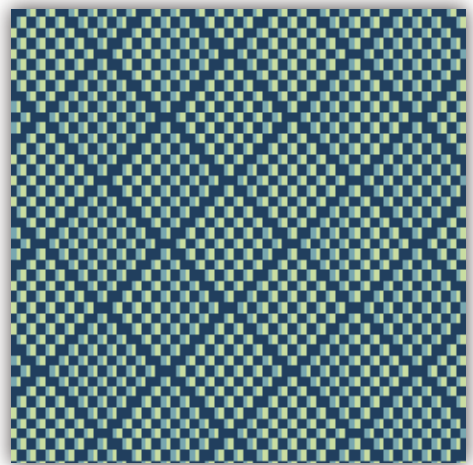
COC 52
R= ▶ 3,2 cm x ▲ 3,9 cm



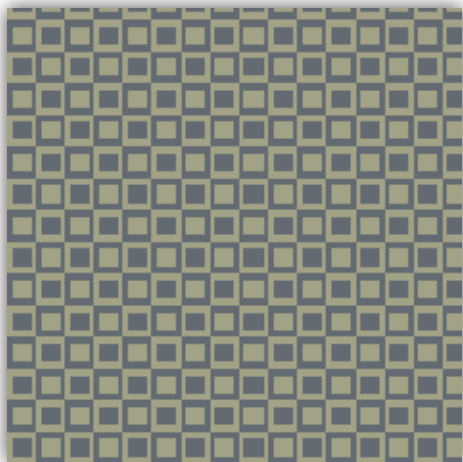
COC 56
R= ▶ 2,6 cm x ▲ 2,9 cm



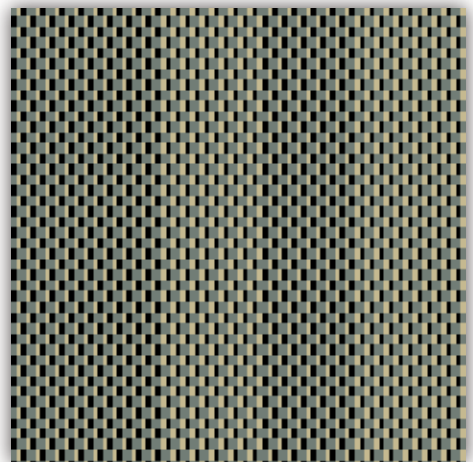
COC 58
R= ▶ 5,8 cm x ▲ 2,0 cm



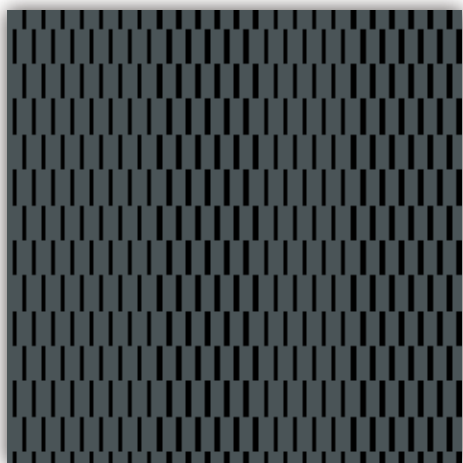
COC 50
R= ▶ 8,3 cm x ▲ 8,8 cm



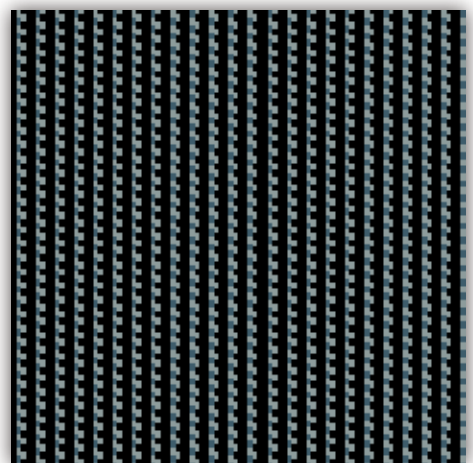
COC 129
R= ▶ 3,8 cm x ▲ 4,4 cm



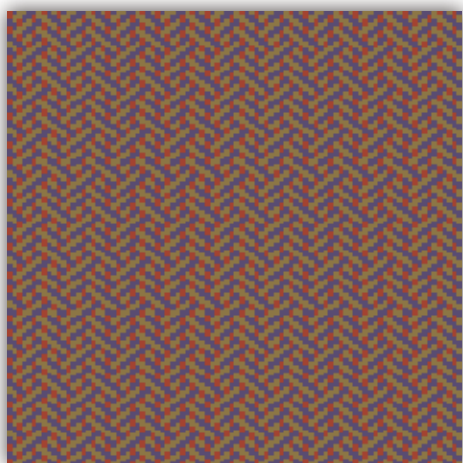
COC 49
R= ▶ 1,3 cm x ▲ 2,9 cm



COC 54
R= ▶ 1,3 cm x ▲ 4,9 cm

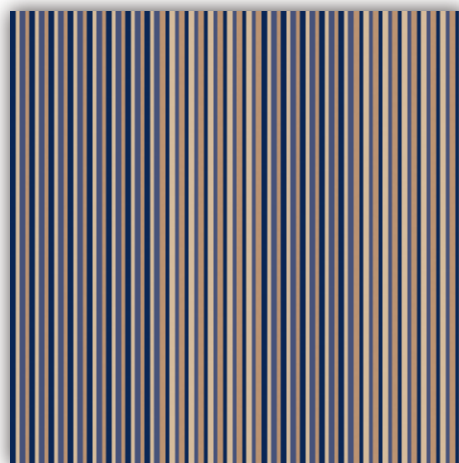


COC 14
R= ▶ 2,6 cm x ▲ 1,0 cm



COC 96

R= ▶ 3,2 cm x ▲ 2,9 cm



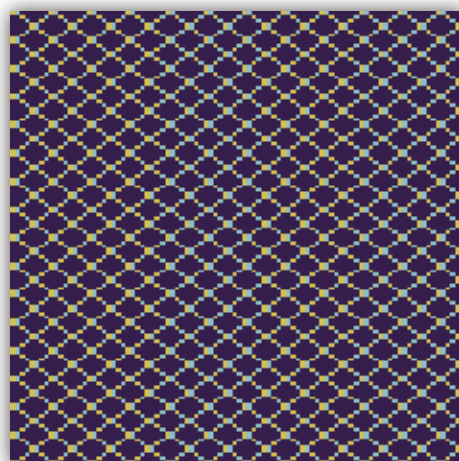
COC 17

R= ▶ 1,3 cm x ▲ 0,0 cm



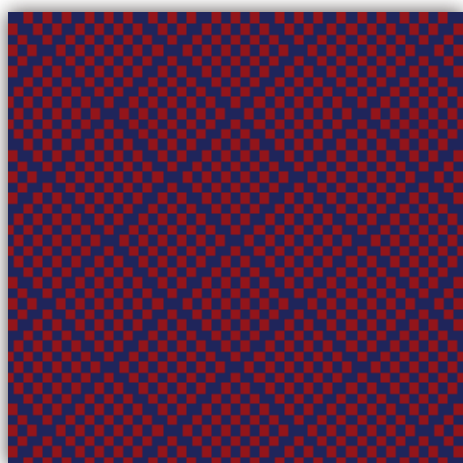
COC 36

R= ▶ 7,7 cm x ▲ 8,8 cm



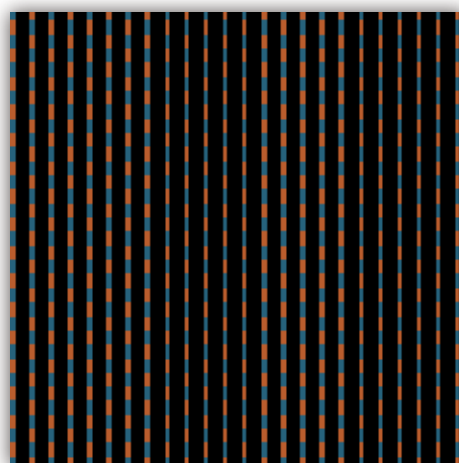
COC 11

R= ▶ 2,6 cm x ▲ 2,0 cm



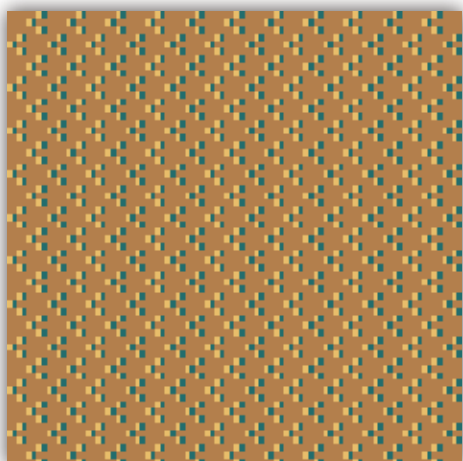
COC 23

R= ▶ 8,3 cm x ▲ 8,8 cm

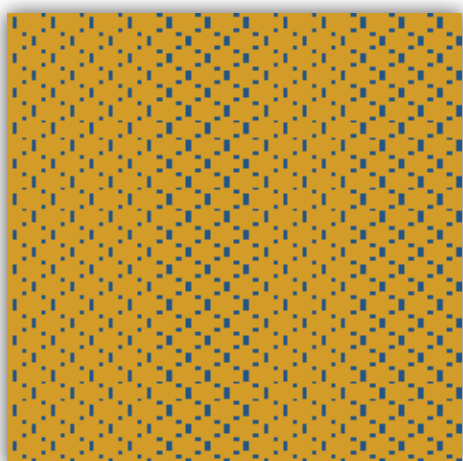


COC 6

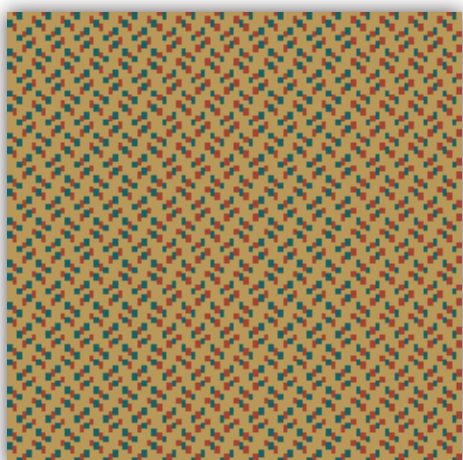
R= ▶ 2,6 cm x ▲ 3,9 cm



COC 84
R= ▶ 2,6 cm x ▲ 2,9 cm

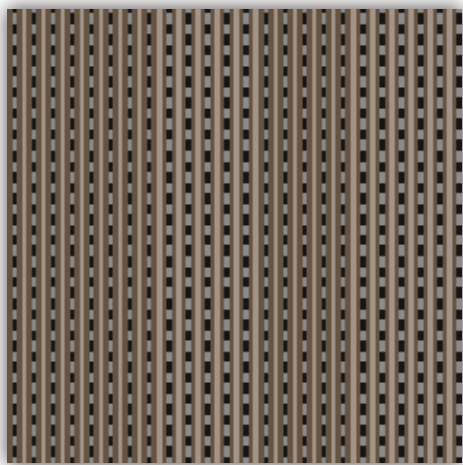


COC 34
R= ▶ 2,6 cm x ▲ 2,4 cm

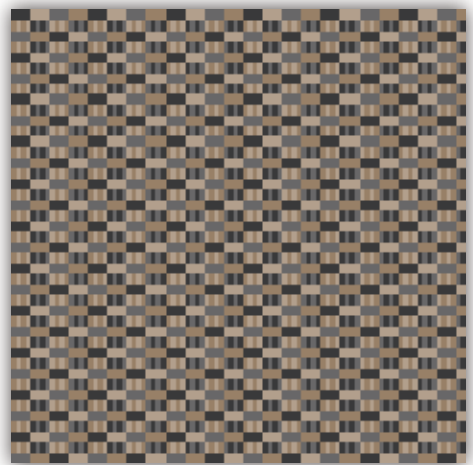


COC 41
R= ▶ 1,9 cm x ▲ 2,9 cm





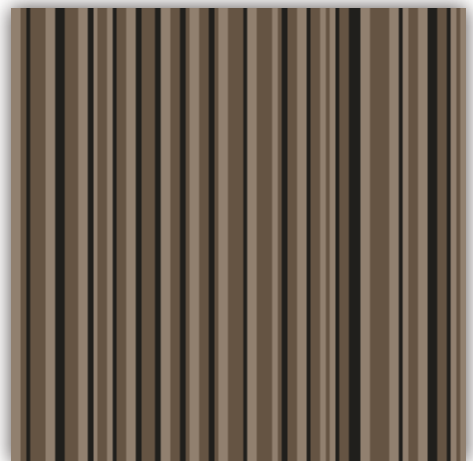
COC 2
R= ▶ 2,6 cm x ▲ 5,9 cm



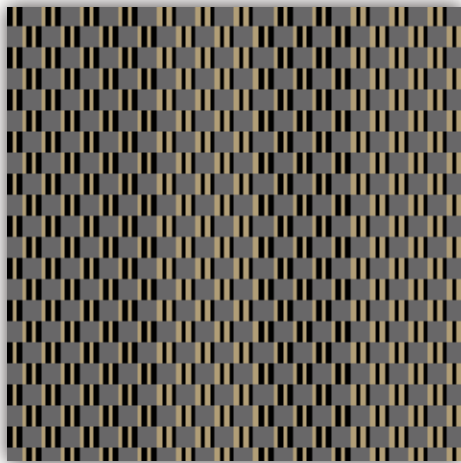
COC 5
R= ▶ 5,1 cm x ▲ 3,9 cm



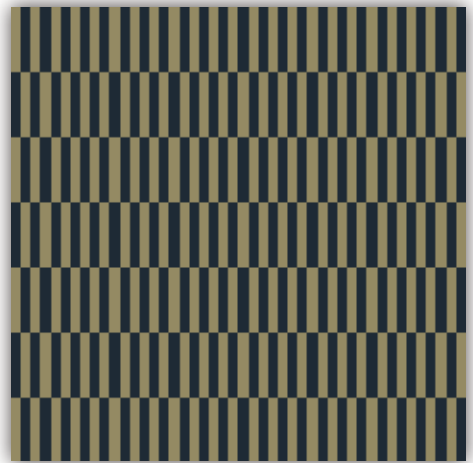
COC 115
R= ▶ 24,3 cm x ▲ 0,0 cm



COC 29
R= ▶ 44,8 cm x ▲ 0,0 cm



COC 48
R= ▶ 2,6 cm x ▲ 2,9 cm



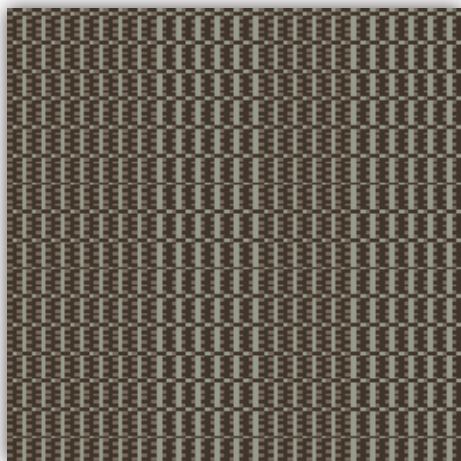
COC 77
R= ▶ 1,3 cm x ▲ 8,8 cm



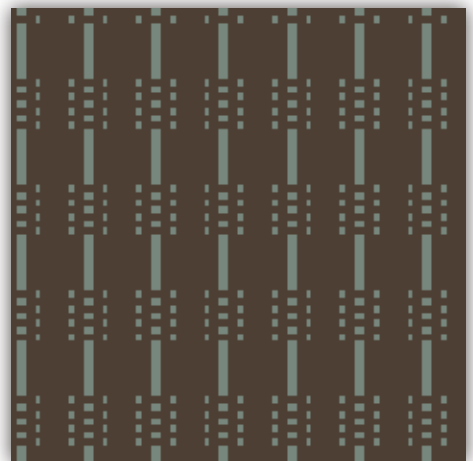
COC 118
R= ▶ 26,2 cm x ▲ 0,0 cm



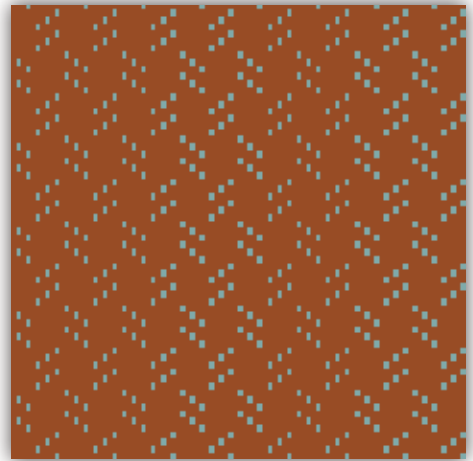
COC 86
R= ▶ 9,0 cm x ▲ 0,0 cm



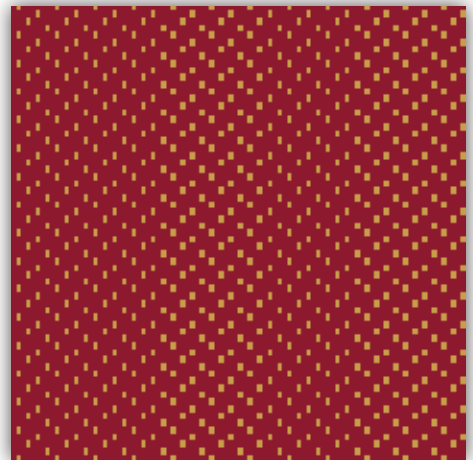
COC 125
R= ▶ 1,3 cm x ▲ 2,0 cm



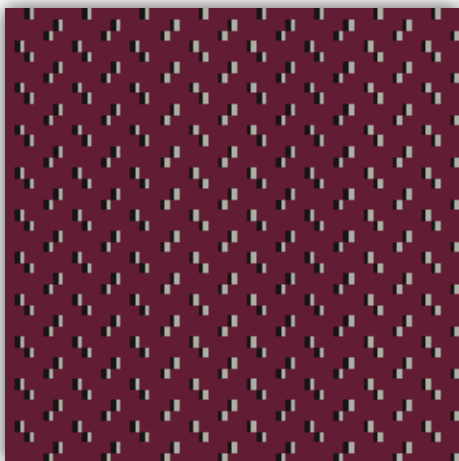
COC 40
R= ▶ 4,5 cm x ▲ 7,3 cm



COC 42
R= ▶ 3,8 cm x ▲ 5,9 cm



COC 45
R= ▶ 2,6 cm x ▲ 3,9 cm



COC 8
R= ▶ 3,8 m x ▲ 2,9 cm

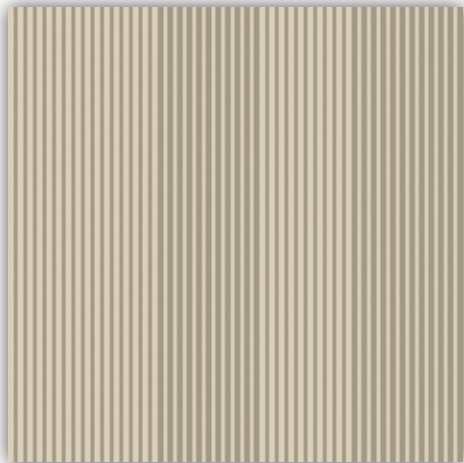


COC 26
R= ▶ 4,5 cm x ▲ 3,9 cm





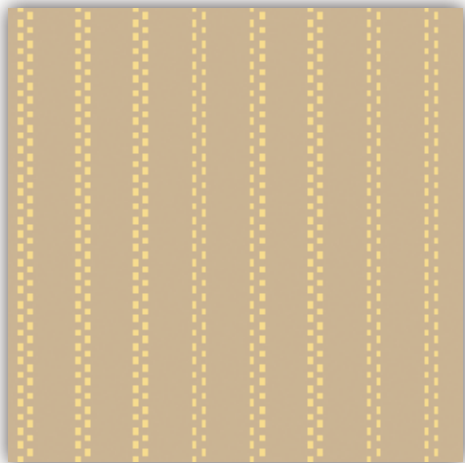
COC 22
R= ▶ 3,8 cm x ▲ 0,0 cm



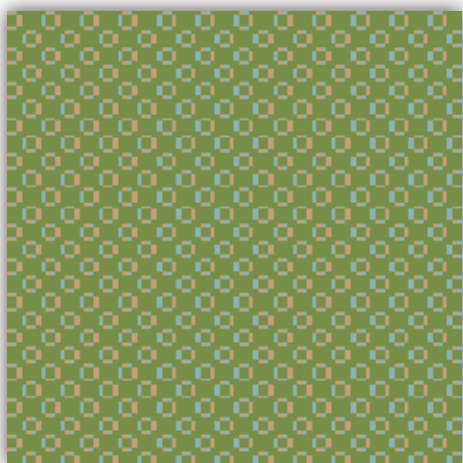
COC 79
R= ▶ 6,0 cm x ▲ 0,0 cm



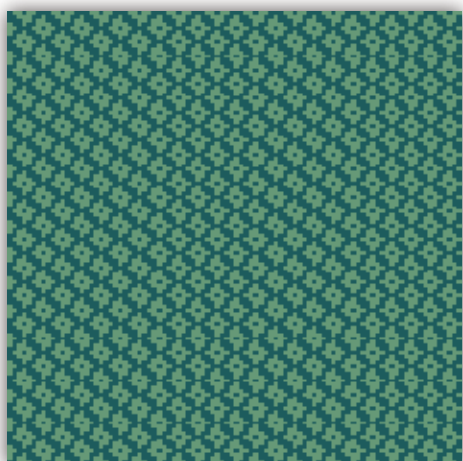
COC 57
R= ▶ 5,8 cm x ▲ 2,0 cm



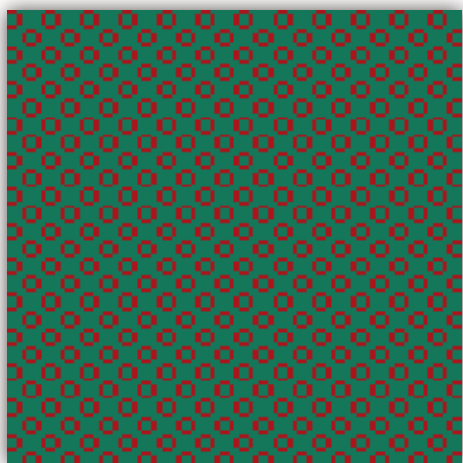
COC 21
R= ▶ 3,8 cm x ▲ 1,0 cm



COC 39
R= ▶ 2,6 cm x ▲ 2,4 cm



COC 51
R= ▶ 2,6 cm x ▲ 3,9 cm



COC 33
R= ▶ 2,6 cm x ▲ 2,4 cm



SUITE

lano carpets for contract

32

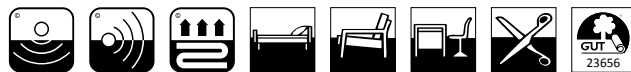
LANO

Flooring Solutions!

Technical data for Suite ± 1100 g/sqm, other technical data on demand.

Fabricagemethode Technique de fabrication Manufacturing process Herstellngsart Tecnica di fabbricazione tufted, 1/8" cross over	Poolsamenstelling Nature du velours Pile composition Polmaterial Composizione felpa 80% WO 20% PA	Tuftdoek Premier dossier Primary backing Trägermaterial Tela di supporto woven	Rugtype Envers Secondary backing Rücken Sottofondo SB/FS
Totale dikte Hauteur totale Total height Gesamthöhe Spessore totale ± 11,0 mm	Nuttige poolhoogte Hauteur de velours utile Effective pile height Tatsächliche Florhöhe Spessore felpa ± 8,0 mm	Breedte Largeur Width Breite Altezza ± 400 cm	Aantal noppen/m ² Nombre de points/m ² Number of knots/sqm Noppenzahl/m ² Numero di punti/mq ± 113400
Poolinzetgewicht/m ² Poids mis en oeuvre/m ² Pile weight/sqm Poleinsatzgewicht/m ² Peso felpa/mq ± 1100 gr	Totaal gewicht/m ² Poids total/m ² Total weight/sqm Poleinsatzgewicht/m ² Peso totale/mq ± 2400 gr	EN 13501-1 Brandgedrag Comportement au feu Fire behaviour Brennverhalten Reazione al fuoco C_{fi}-s1	EN 1307-2004 Classificatie Classification Classificazione Classificazione Class 23 Domestic Heavy Class 32 Commercial General
ISO 140/8 1997 Contactgeluidsisolatie Isolation aux bruits d'impact Impact sound insulation Trittschallverbesserungsmaß Miglioramento acustico ± 27 dB	ISO 354 Geluidsdempingsvermogen α _s Absorption phonique α _s Sound absorption α _s Schallabsorptionsgrad α _s Grado d'assortimento acustico α _s ± 0,39 1000 Hz	ISO 11654 Geluidsdempingsvermogen α _w Absorption phonique α _w Sound absorption α _w Schallabsorptionsgrad α _w Grado d'assortimento acustico α _w ± 0,25	DIN 52612 Warmteoorlaatweerstand Résistivité thermique Thermal retention Wärmedurchlaßwiderstand Resistenza termica ± 0,098 m²/kW
TOG rating ± 0,98	ISO 105 B02 2000 Lichtechtheid Solidité à la lumière Lightfastness Lichtechtheid Solidità colori alla luce ≥ 5	ISO 105 E01 2002 Waterechtheid verkleuring Solidité à l'eau changement couleur Waterfastness change in colour Wasserechtheit Änderung der Farbe Solidità colori all'acqua cambio colore ≥ 4	ISO 105 E01 2002 Waterechtheid uitbloeding Solidité à l'eau dégorgeement Waterfastness staining Wasserechtheit anbluten Solidità colori all'acqua sfumatura colore ≥ 4
ISO 105 X12 2001 Wrijftechtheid droog Solidité au frottement sec Rubbingfastness dry Reibungechtheit trocken Solidità colori allo sfregamento a secco ≥ 4	ISO 105 X12 2001 Wrijftechtheid nat Solidité au frottement humide Rubbingfastness wet Reibungechtheit nass Solidità colori allo sfregamento umido ≥ 4	Ce produit s'inscrit dans la démarche HQE (F.D.E.S. selon la norme NF P01-10 disponible sur demande). F.D.E.S. = fiche de données environnementales et sanitaires. HQE	

(±) These details are approximate. Complete specification details and associated certificates together with tolerances applying to the above can be provided upon request. We reserve the right to improve technical specifications without prior notice. Due to method of manufacture perfect pattern and/or colour matching cannot be guaranteed. In cut-pile carpeting, in rare cases, shading/pile reversal may occur without affecting its fitness for use. Shading/pile reversal can not be considered as a manufacturing or a material defect and will not affect the durability of the carpet. For other languages see: www.lano.com



LANO

Flooring Solutions!

Zuidstraat 44 - B-8530 Harelbeke
t +32 56 65 40 00 - f +32 56 65 40 09
marketing@lano.be - www.lano.com