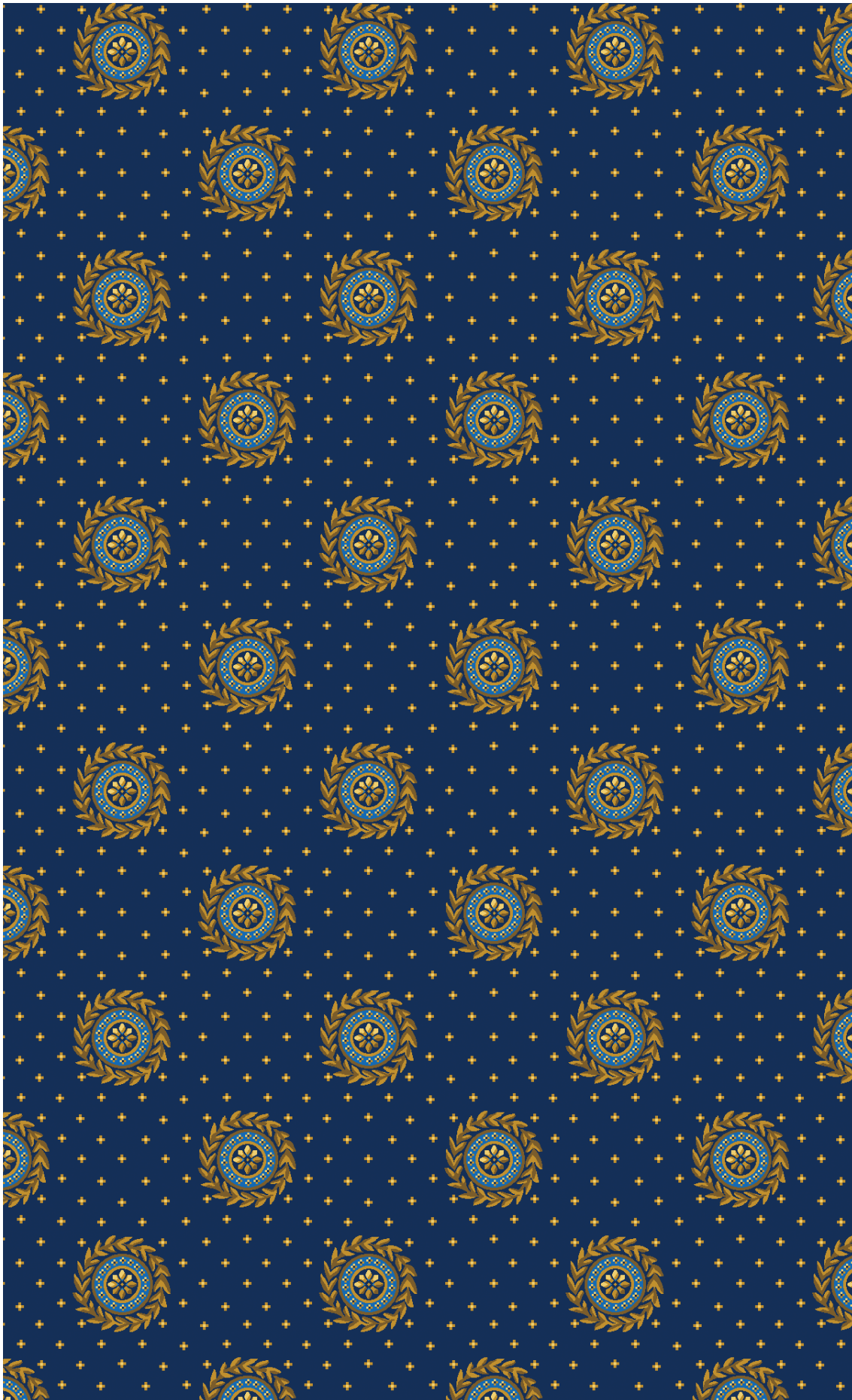


RA1974C1

5 colori • W 35,3 x L 35 cm

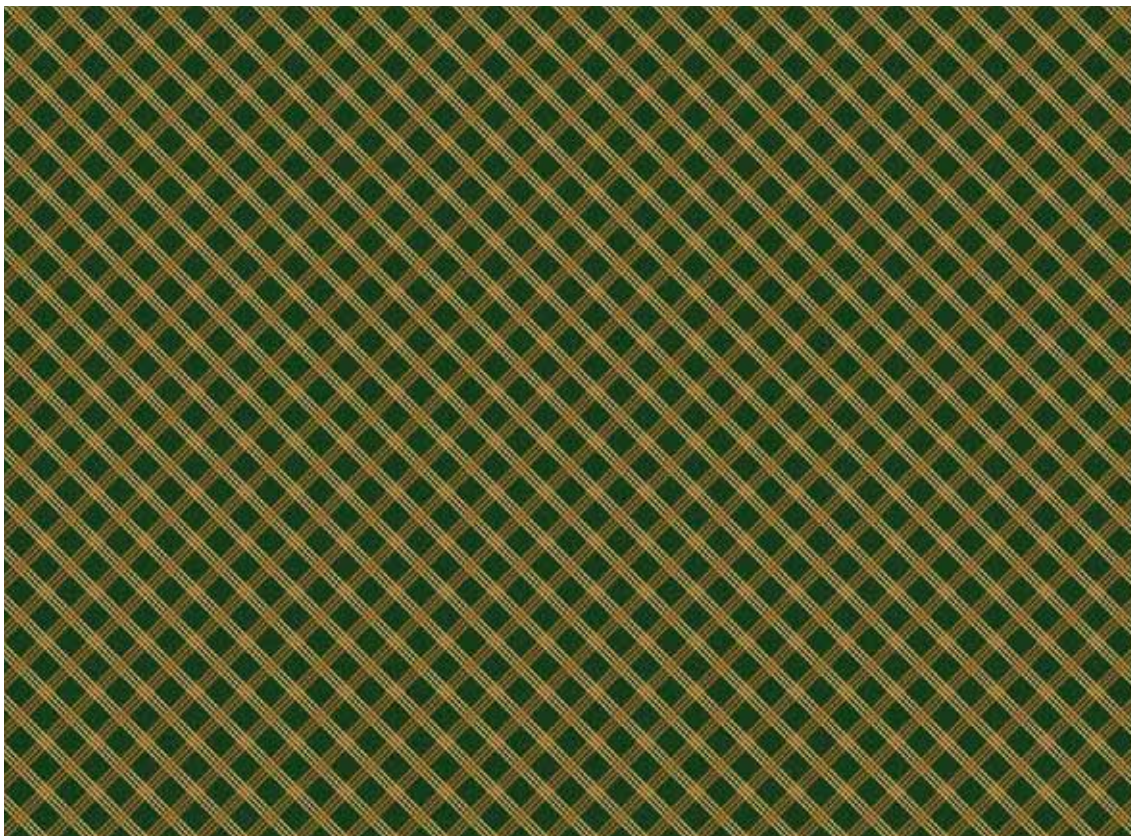


RA1974C1

PA1868C2

RA1868C2

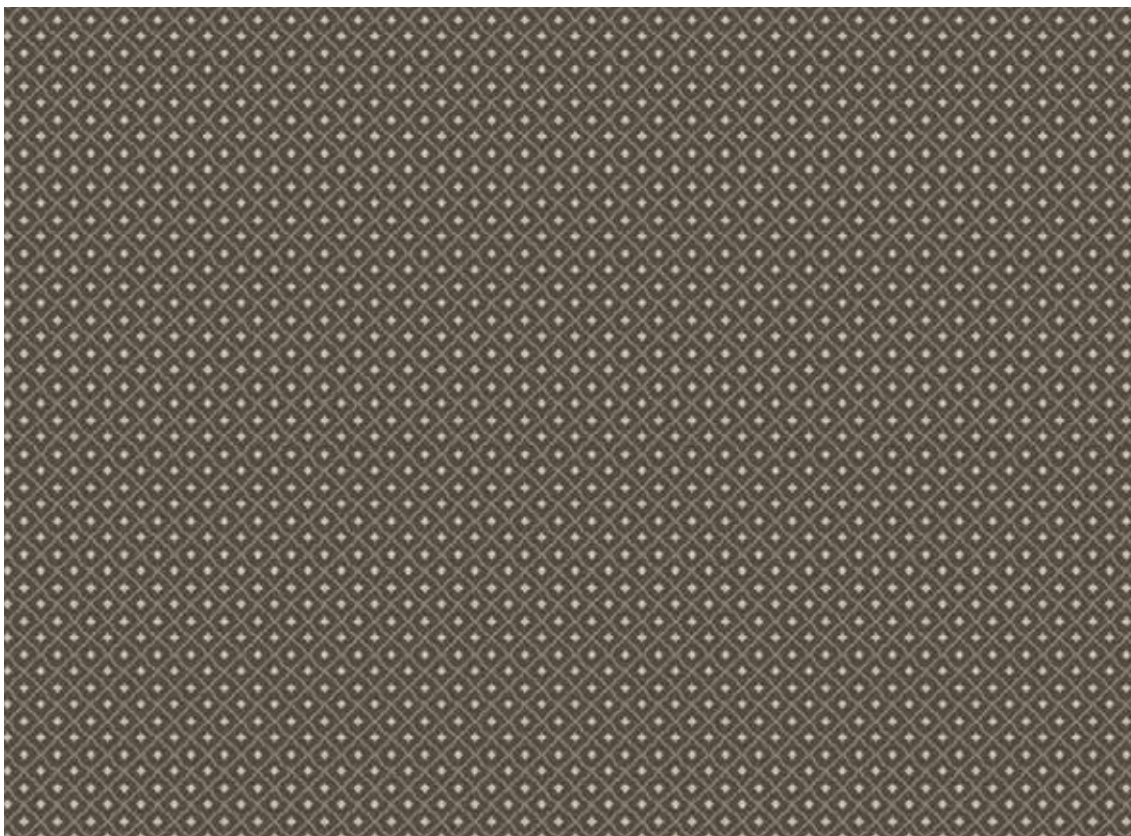
3 colori • W 7,8 x L 7,8 cm



PA2152C2

RA2152C2

5 colori • W 5 x L 5 cm



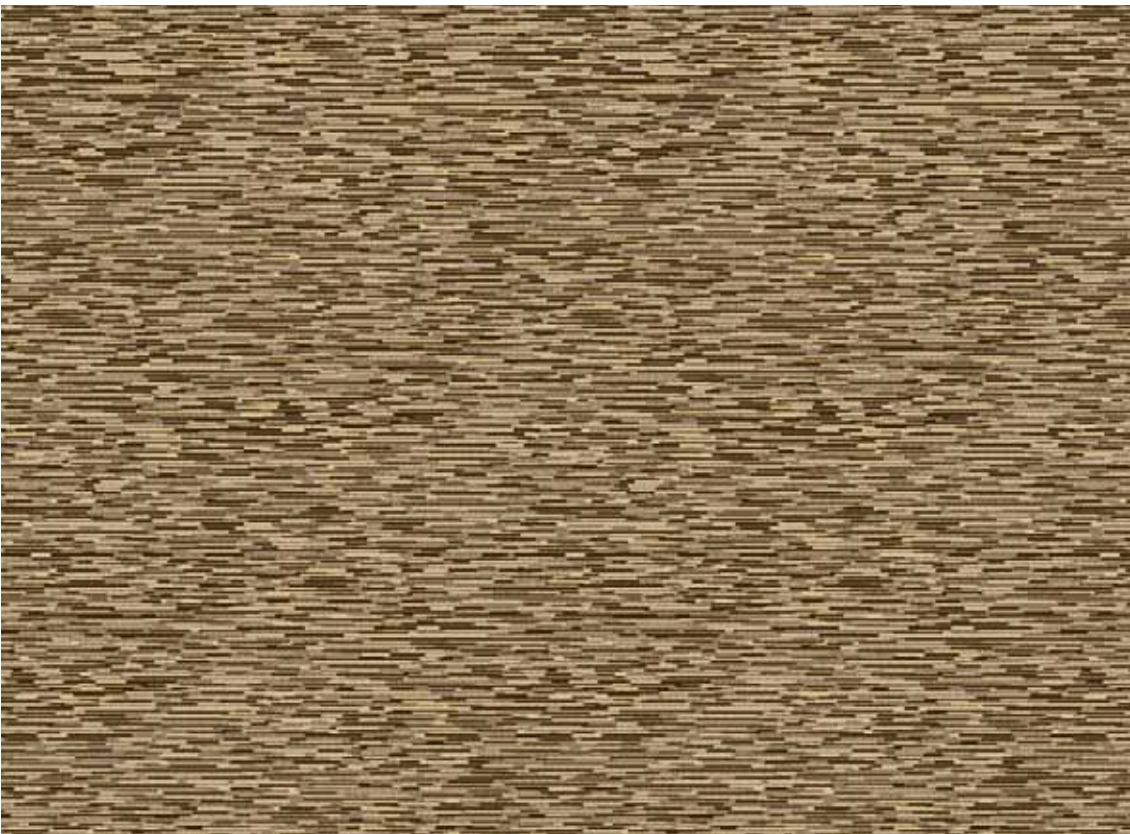
RA2056M2

5 colori • W 55,1 x L 54,6 cm



RA1827C1

4 colori • W 80,8 x L 80 cm

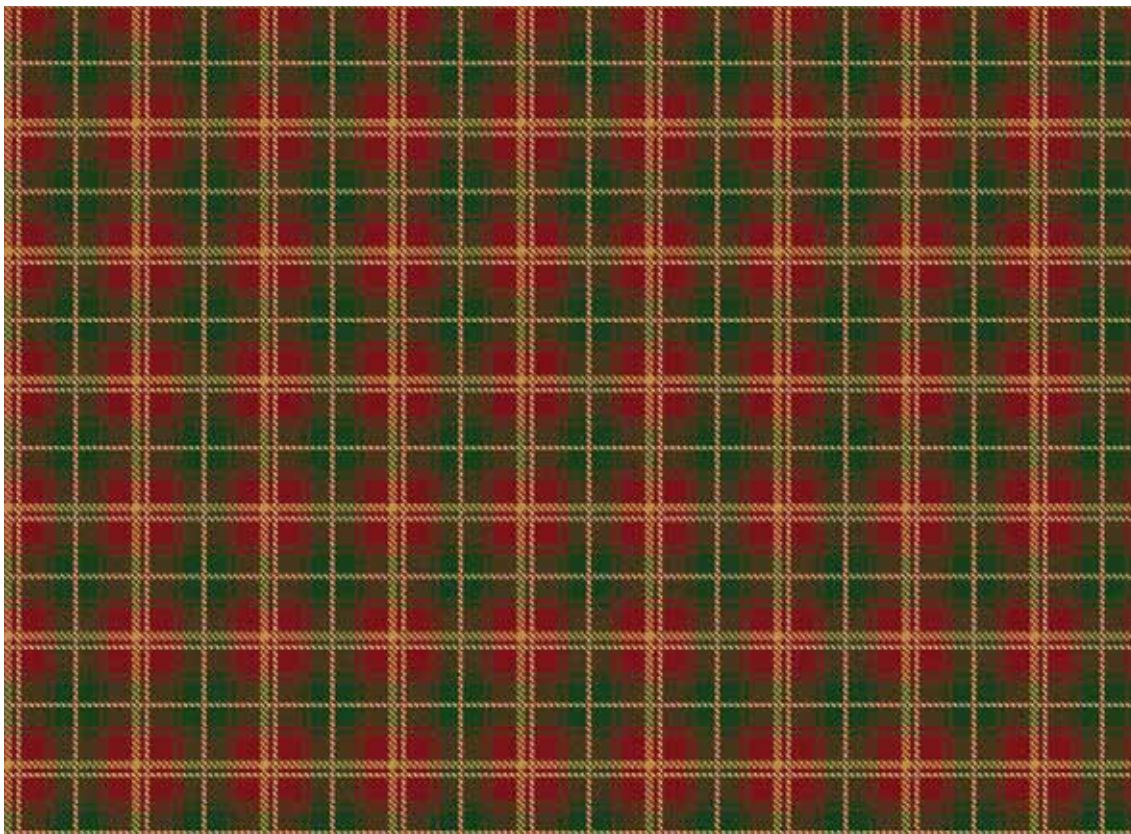


RA2056M2  
RA1827C1

RA2131C1

RA2131C1

4 colori • W 20,2 x L 20 cm



RA2008C3

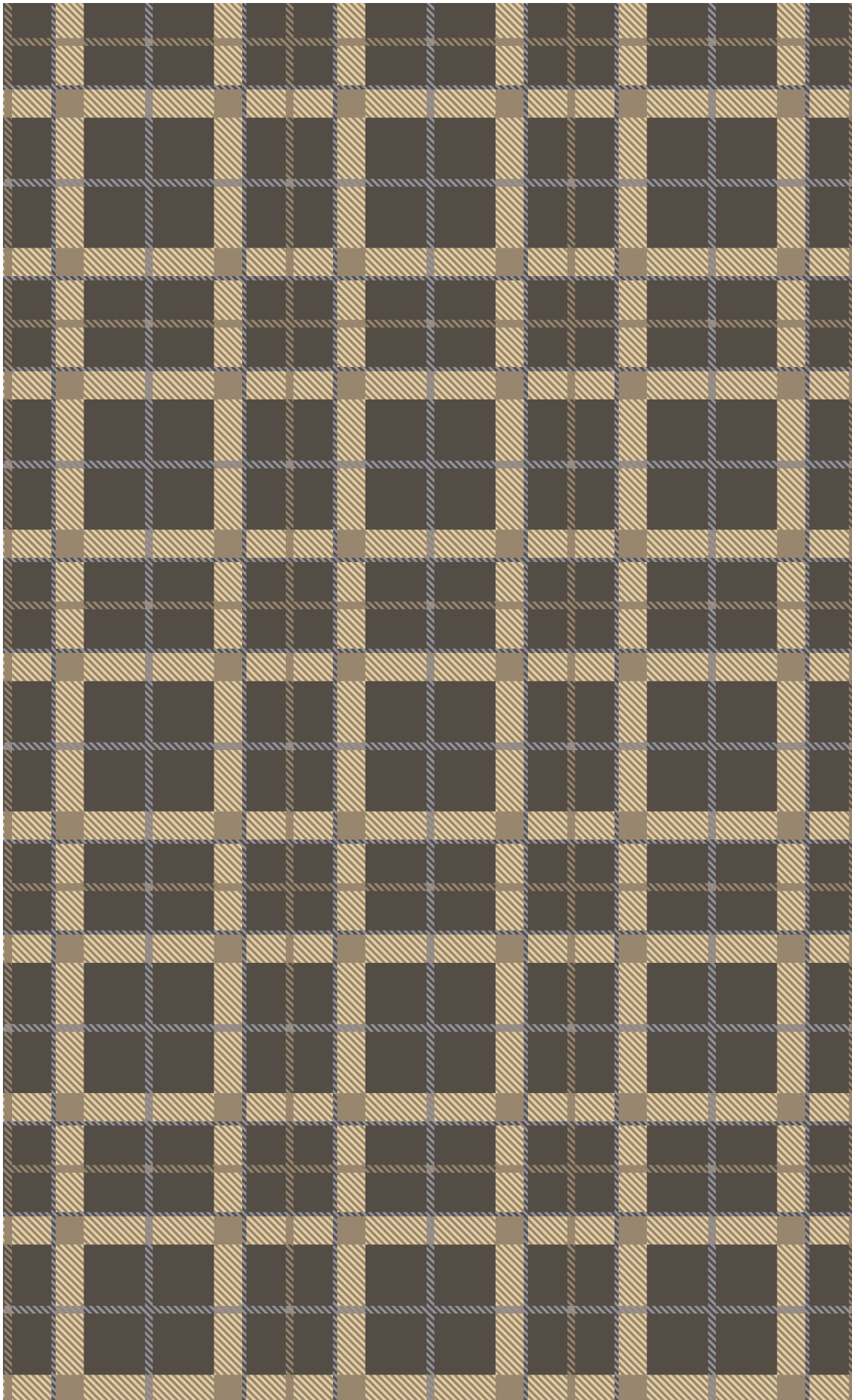
RA2008C3

4 colori • W 40 x L 39,6 cm



RA2000C2

4 colori • W 40,4 x L 40 cm



RA2000C2

RA2080C1

RA1830C2

RA2080C1

11 colori • W 159,8 x L 111,9 cm



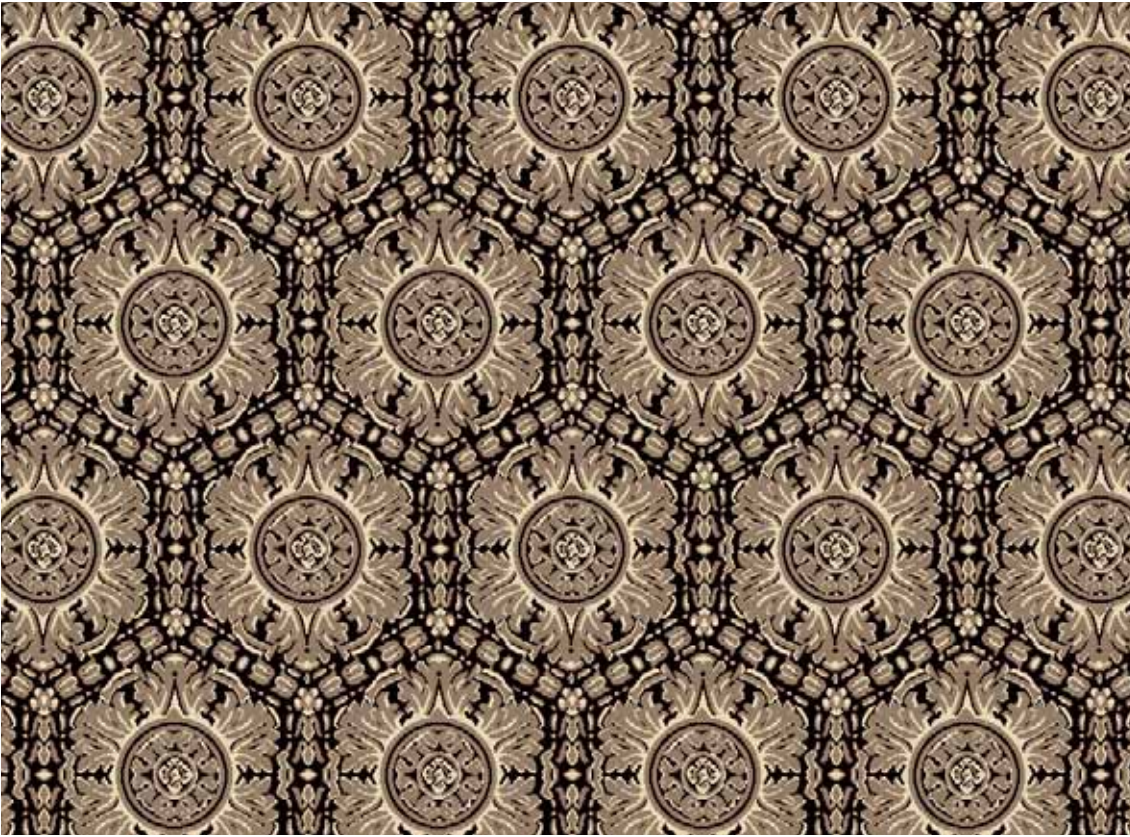
RA1830C2

5 colori • W 59,7 x L 89,6 cm



RA2004C3

3 colori • W 41,6 x L 70,4 cm



RA1733C2

2 colori • W 15,3 x L 32 cm



RA2004C3

RA1733C2

# RA2180C1

RA2180C1

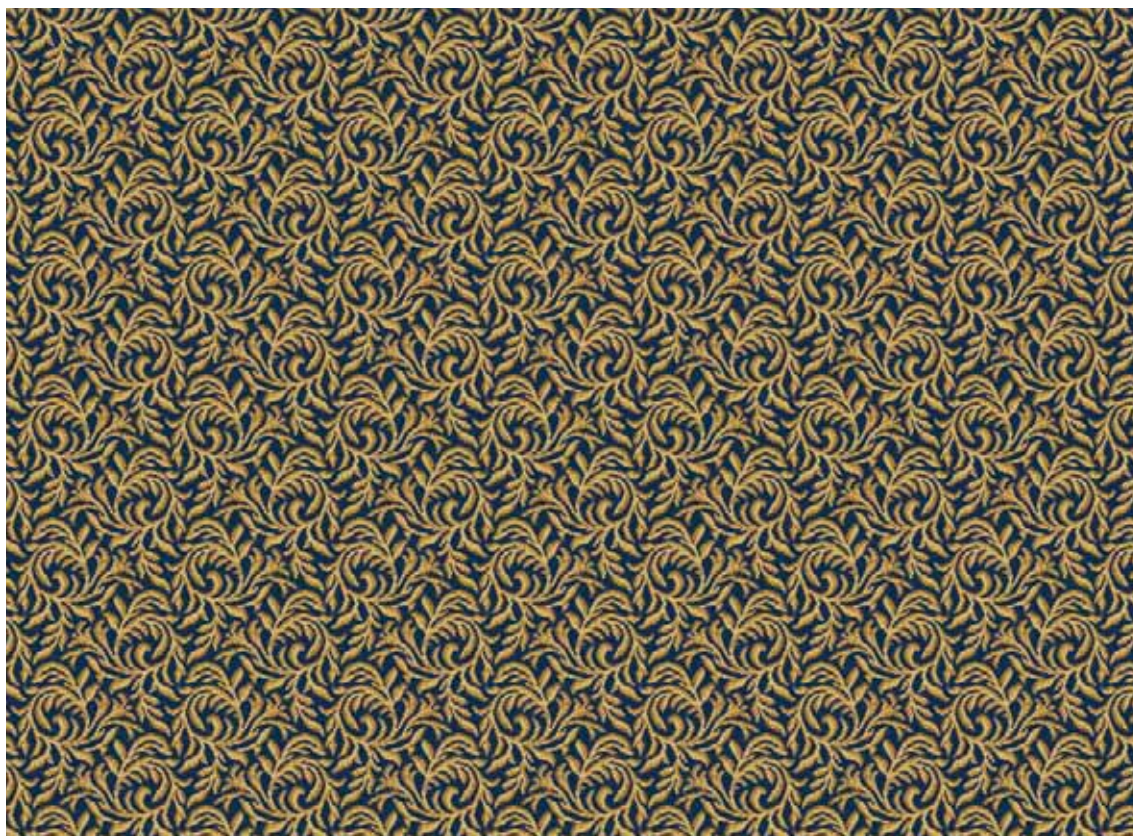
2 colori • W 54,3 x L 110,6 cm





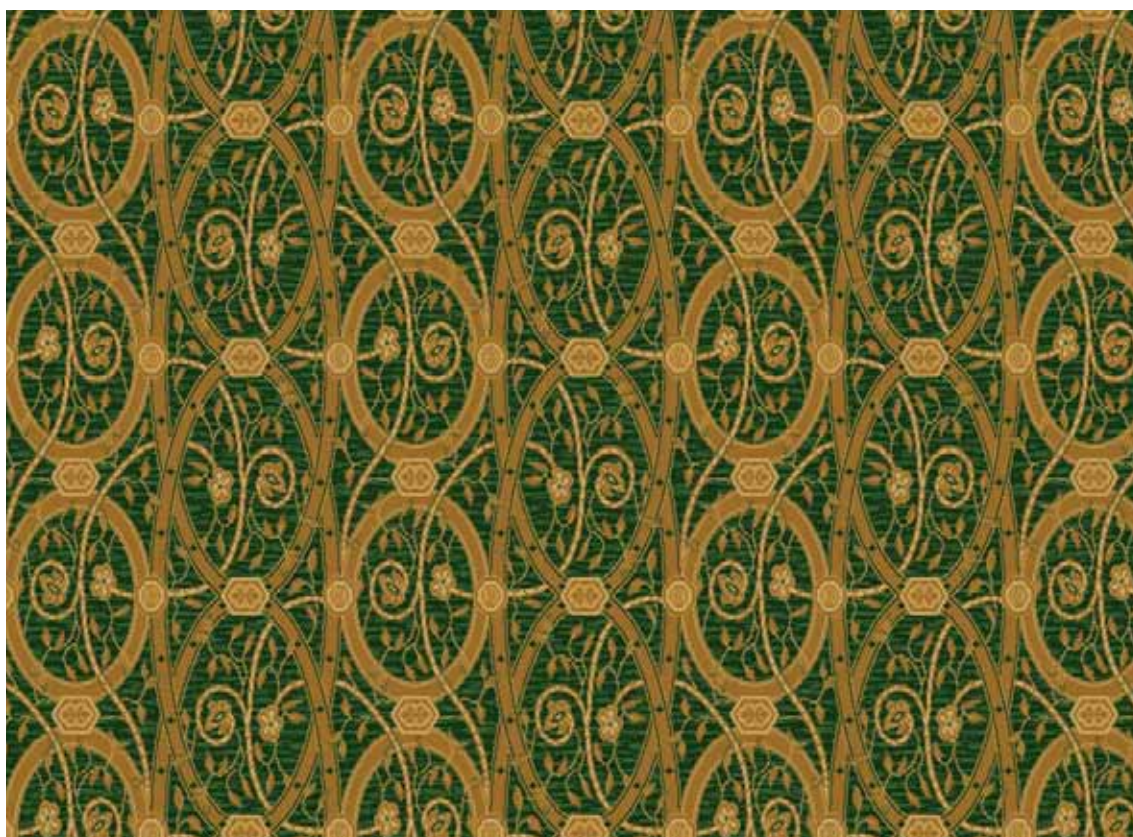
TC055\_06C2

3 colori • W 40 x L 37,3 cm



TC090\_06C1

5 colori • W 79,3 x L 89 cm



TC055\_06C2  
TC090\_06C1

TC022\_08C1  
TC023\_08C1

TC022\_08C1

5 colori • W 97,5 x L 85,7 cm



TC023\_08C1

4 colori • W 126,8 x L 96,8 cm



TC142\_07C2

5 colori • W 33,3 x L 33,3 cm



TC078\_08C1

4 colori • W 24 x L 24 cm



TC142\_07C2  
TC078\_08C1

TC004\_08C1  
TC112\_07C3

TC004\_08C1

5 colori • W 30 x L 36 cm



TC112\_07C3

4 colori • W 26,2 x L 27,4 cm



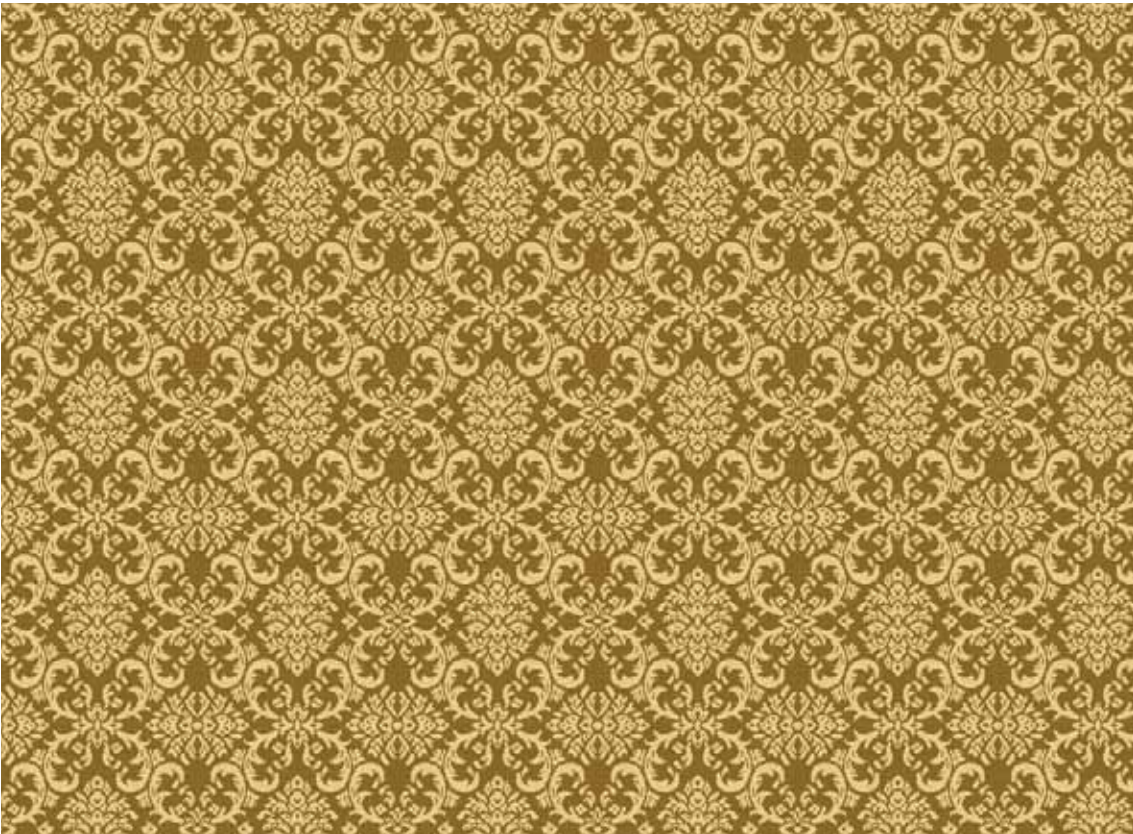
TC041\_08C1

5 colori • W 50 x L 50 cm



TC128\_06C2

3 colori • W 50 x L 52 cm



TC041\_08C1  
TC128\_06C2

TC050\_07C1

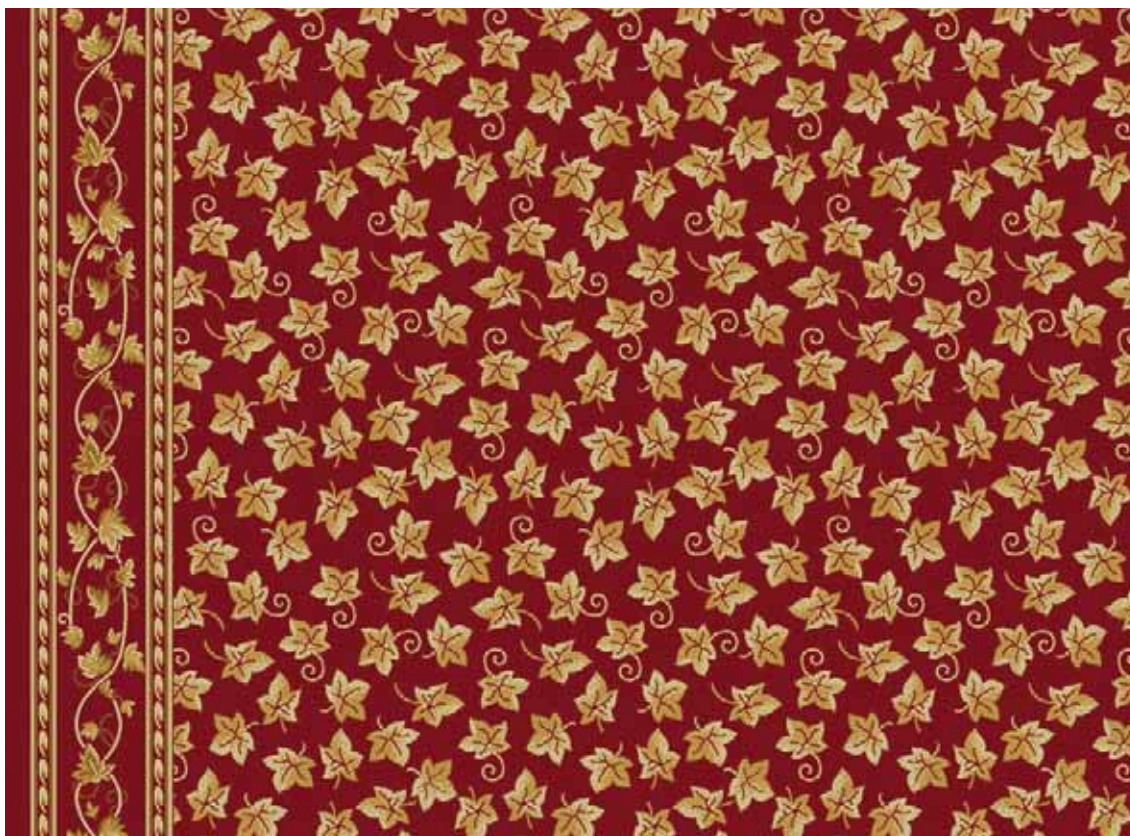
TC050\_07C1

2 colori • W 133 x L 168 cm



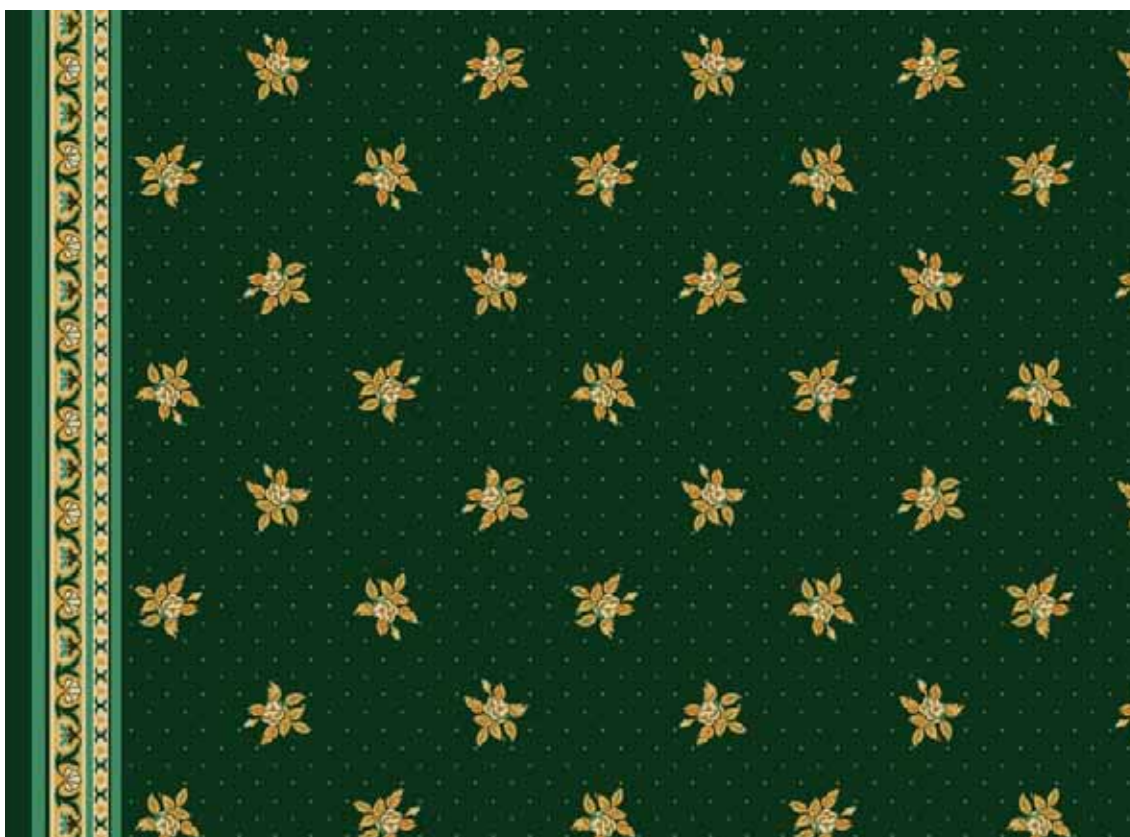
RA2094C2

4 colori • centro W 50 x L 50 cm - bordo W 22,2 x L 48,1



RA1384C1

5 colori • centro W 65,9 x L 64,4 cm - bordo W 13,5 x L 13,3



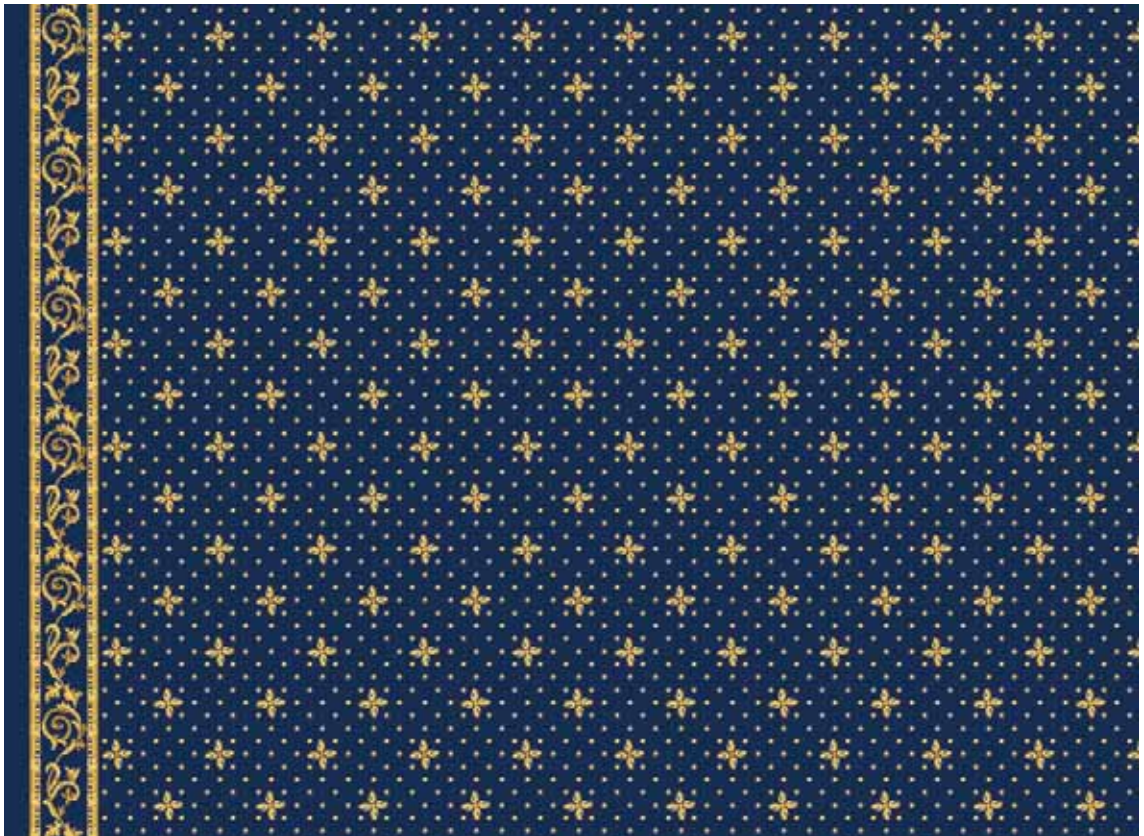
RA2094C2

RA1384C1

RA526BC

RA526BC

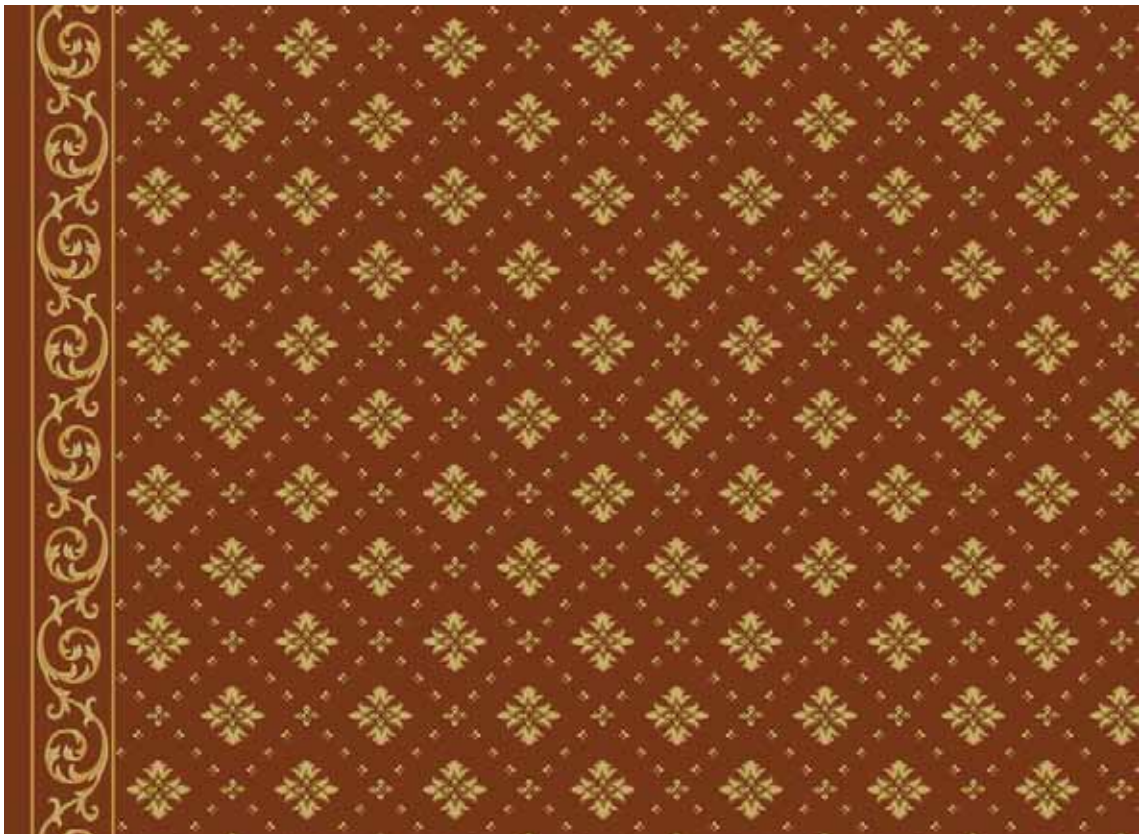
3 colori • centro W 16,1 x L 16 cm - bordo W 10,8 x L 21,7



RA1509C2

RA1509C2

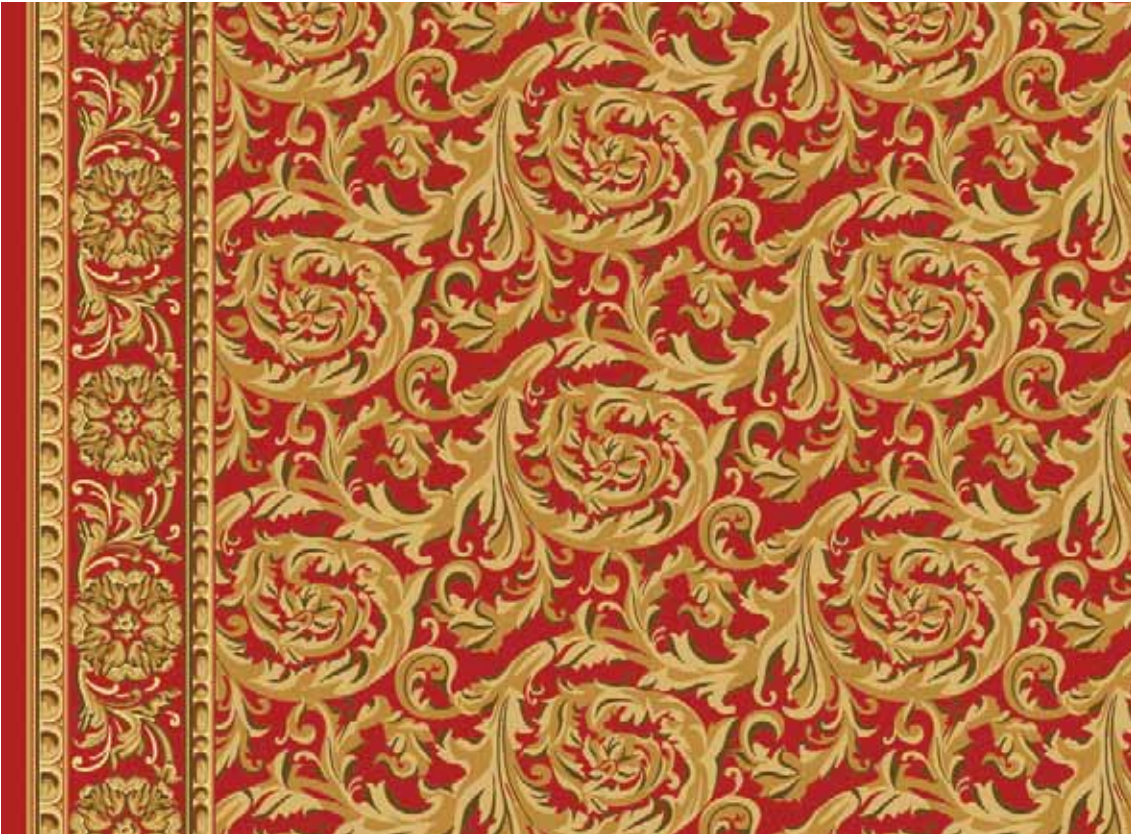
5 colori • centro W 22,4 x L 22,2 cm - bordo W 12,7 x L 30,2





RA2156BC

5 colori • centro W 95,8 x L 46,7 cm - bordo W 29,4 x L 64,4



RA1004BC

3 colori • centro W 36,5 x L 36 cm - bordo W 25 x L 108



RA2156BC

RA1004BC

RA1819C2

RA1819C2

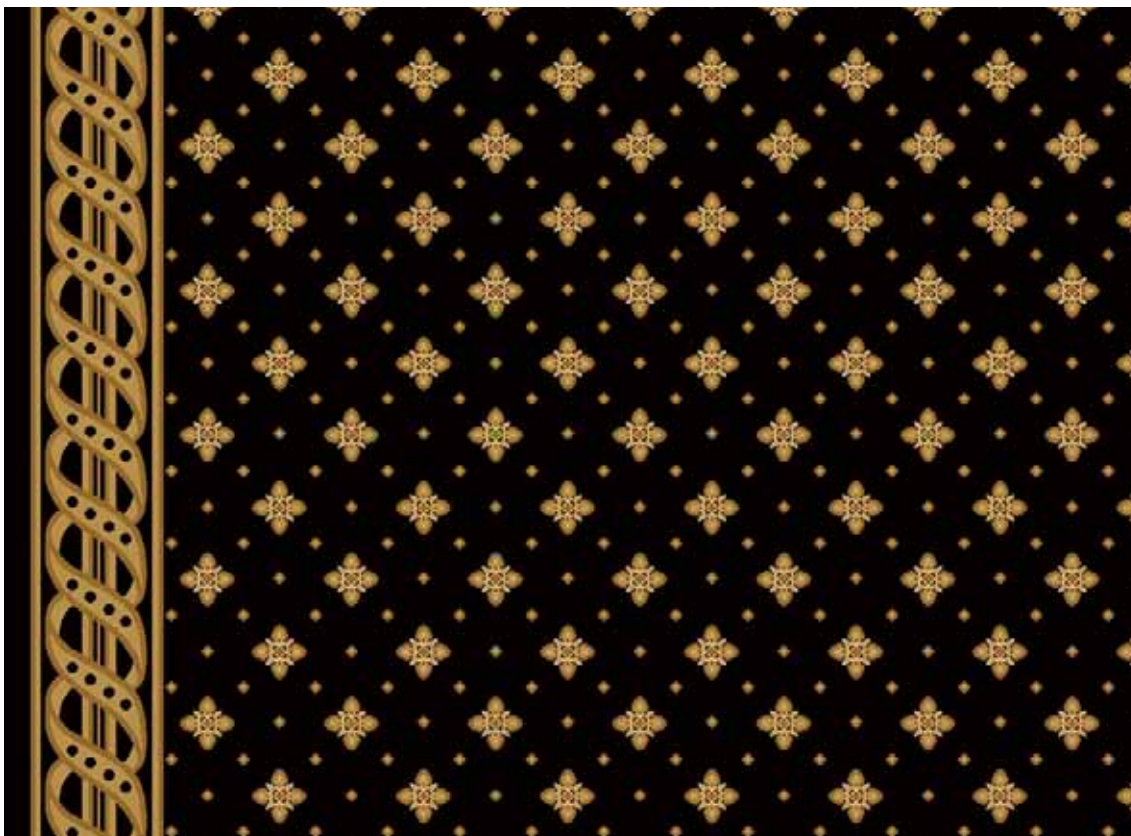
4 colori • centro W 13,7 x L 13,6 cm - - bordo W 23,6 x L 5,6



RA1128C

RA1128C

5 colori • centro W 21,8 x L 21,6 cm - - bordo W 20,1 x L 12,4



RA1835C2B2

3 colori • centro W 15,7 x L 15,6 cm - bordo W 31,3 x L 31



RA1835C2B2

RA2082C2

RA2082C2

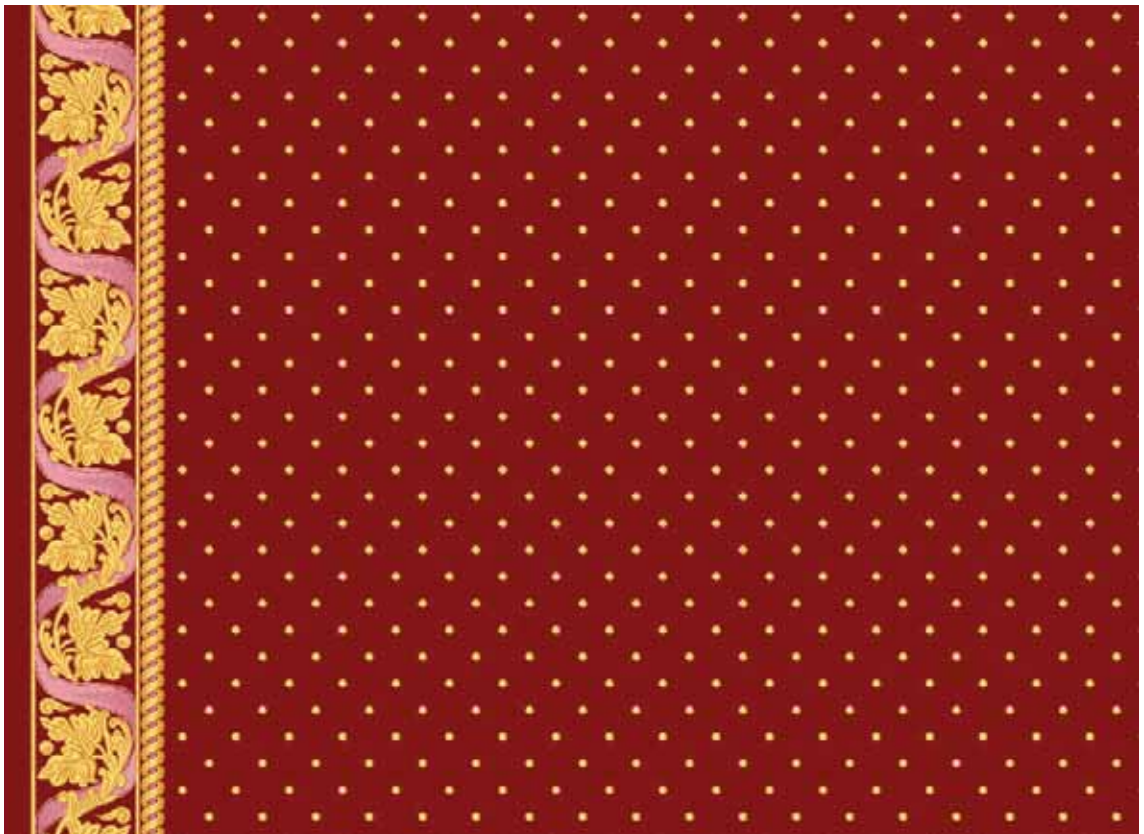
5 colori • centro W 11,9 x L 11,6 cm - bordo W 10,9 x L 6,4



RA2186P1

RA2186P1

5 colori • centro W 8 x L 8 cm - bordo W 20,4 x L 32,2



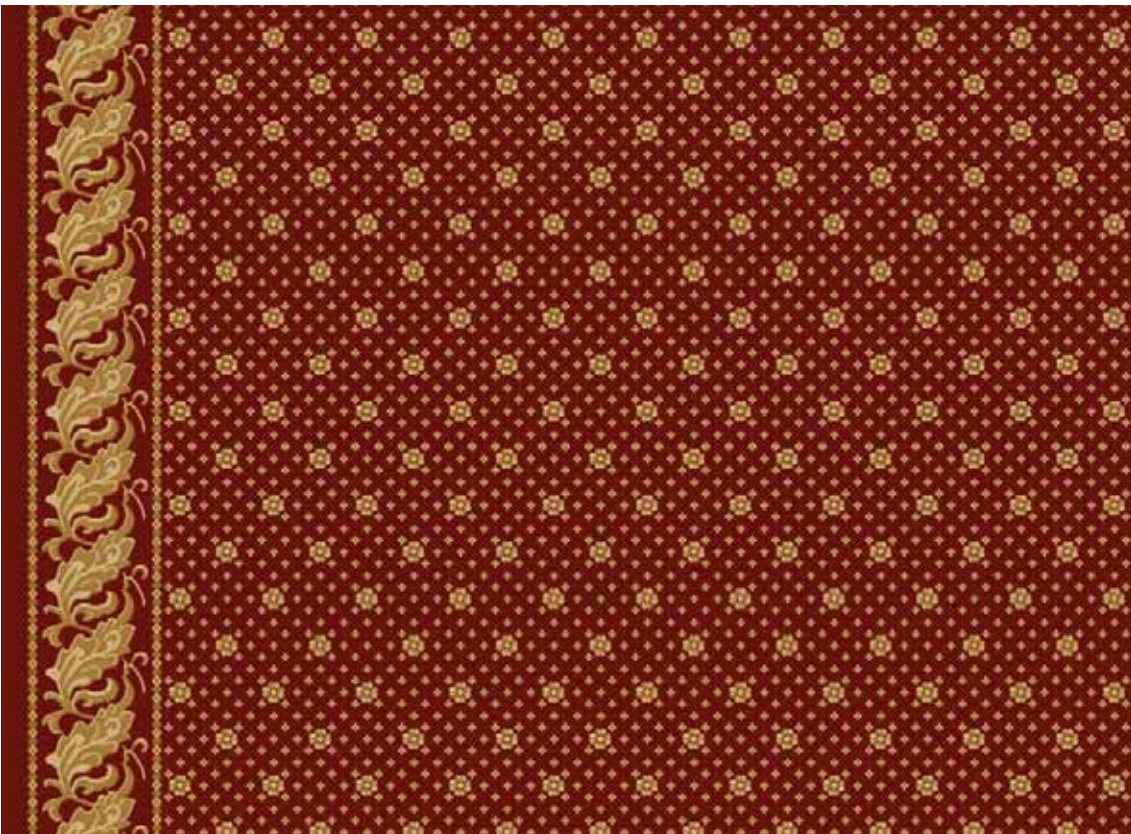
RA1315C1

4 colori • centro W 18,2 x L 18,1 cm - bordo W 15,9 x L 20,2



RA1937C1

4 colori • centro W 14,1 x L 14 cm - bordo W 20,2 x L 13



RA1315C1

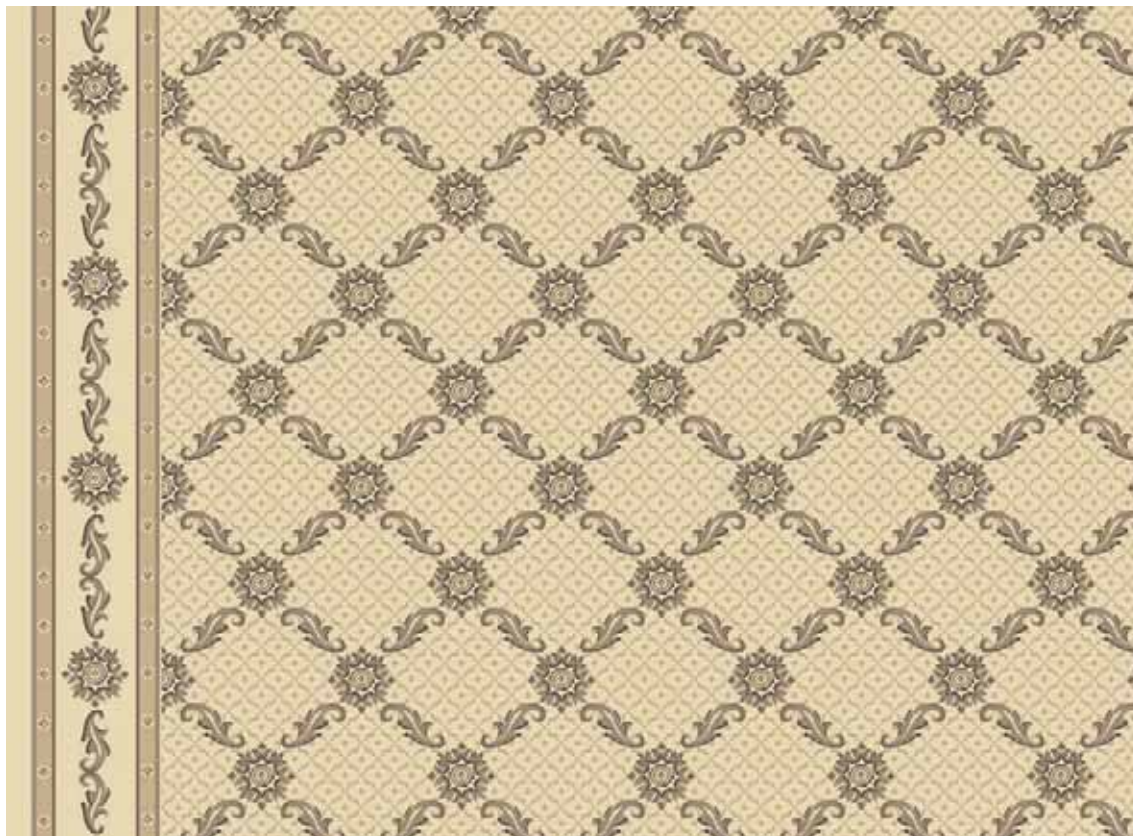
RA1937C1

RA1960BC1

RA1401C1

RA1960BC1

5 colori • centro W 31,5 x L 30 cm - bordo W 20,2 x L 30,5



RA1401C1

5 colori • centro W 33,6 x L 32,9 cm - bordo W 16,4 x L 33,2



RA1437C1B2

5 colori • centro W 11,5 x L 11,4 cm - bordo W 27,7 x L 6,8



RA1888C2

4 colori • centro W 38,3 x L 38,4 cm - bordo W 15,1 x L 26,8

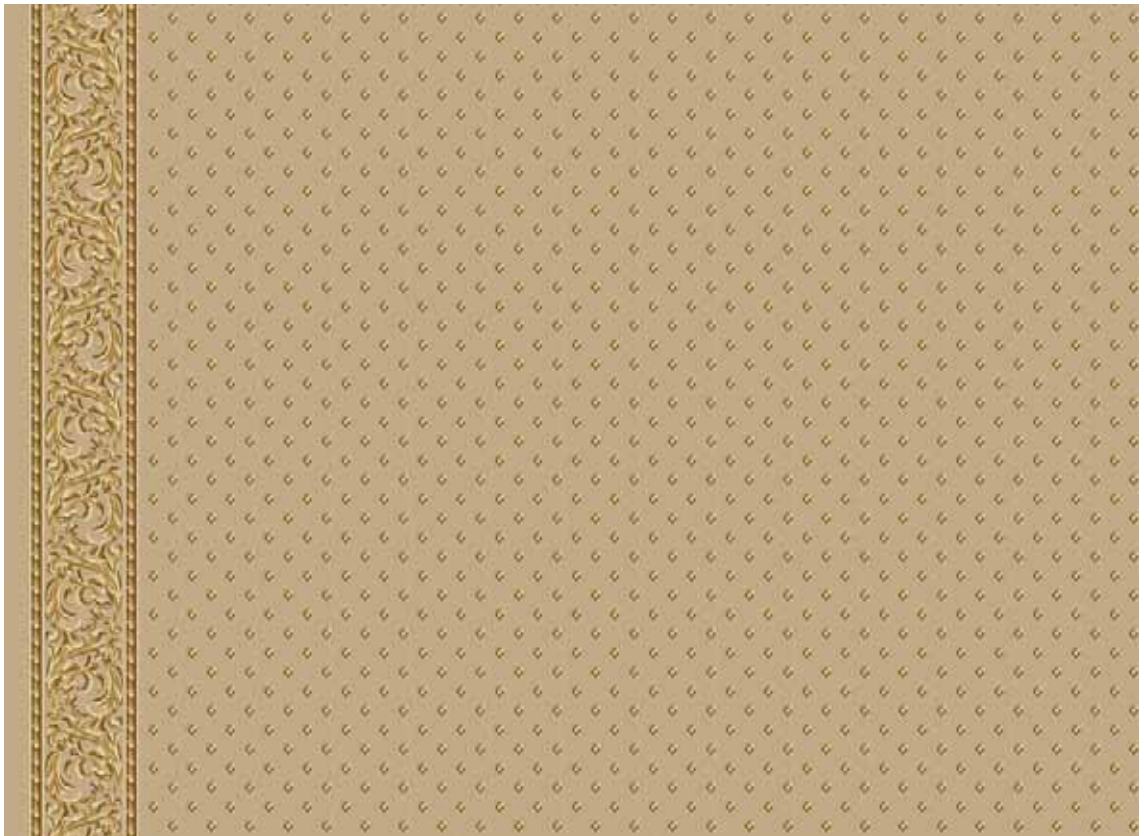


RA1437C1B2  
RA1888C2

RA2110P1

RA2110P1

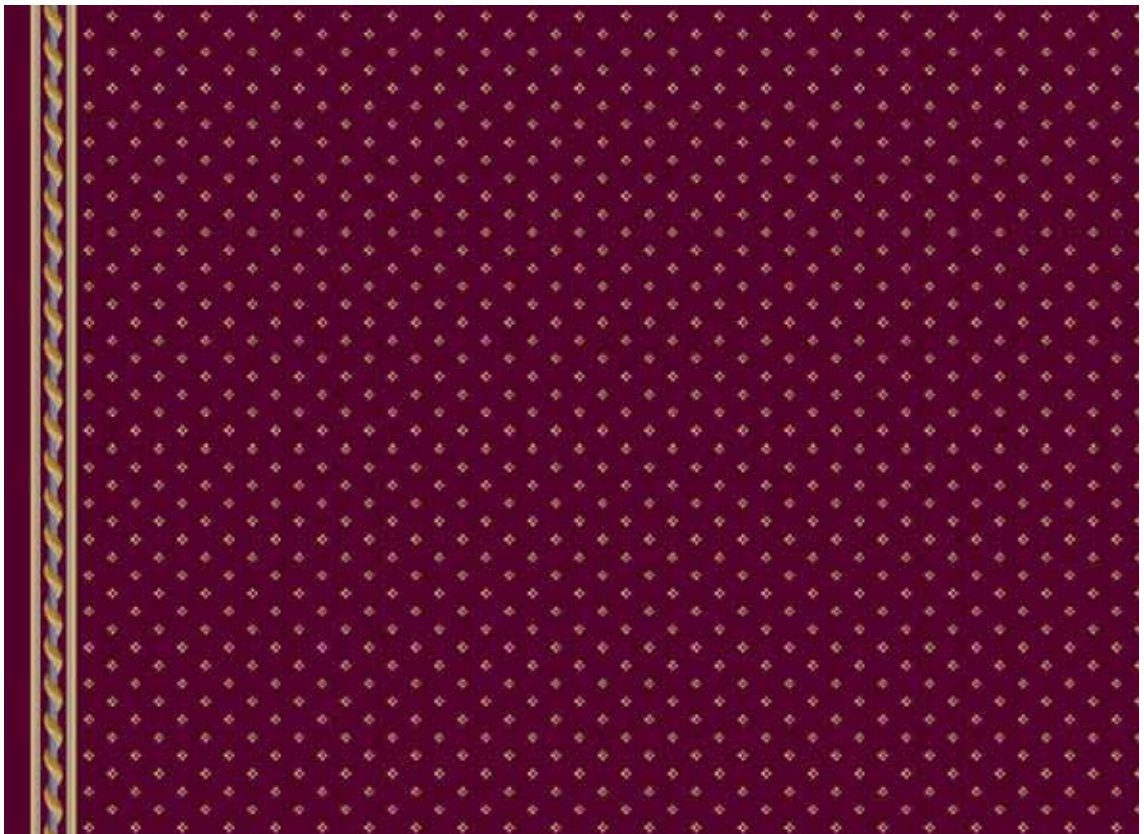
5 colori • centro W 6 x L 6 cm - bordo W 17,1 x L 26,8



RA2138B1P1

RA2138B1P1

6 colori • centro W 7 x L 5,4 cm - bordo W 6,8 x L 5,6





# References





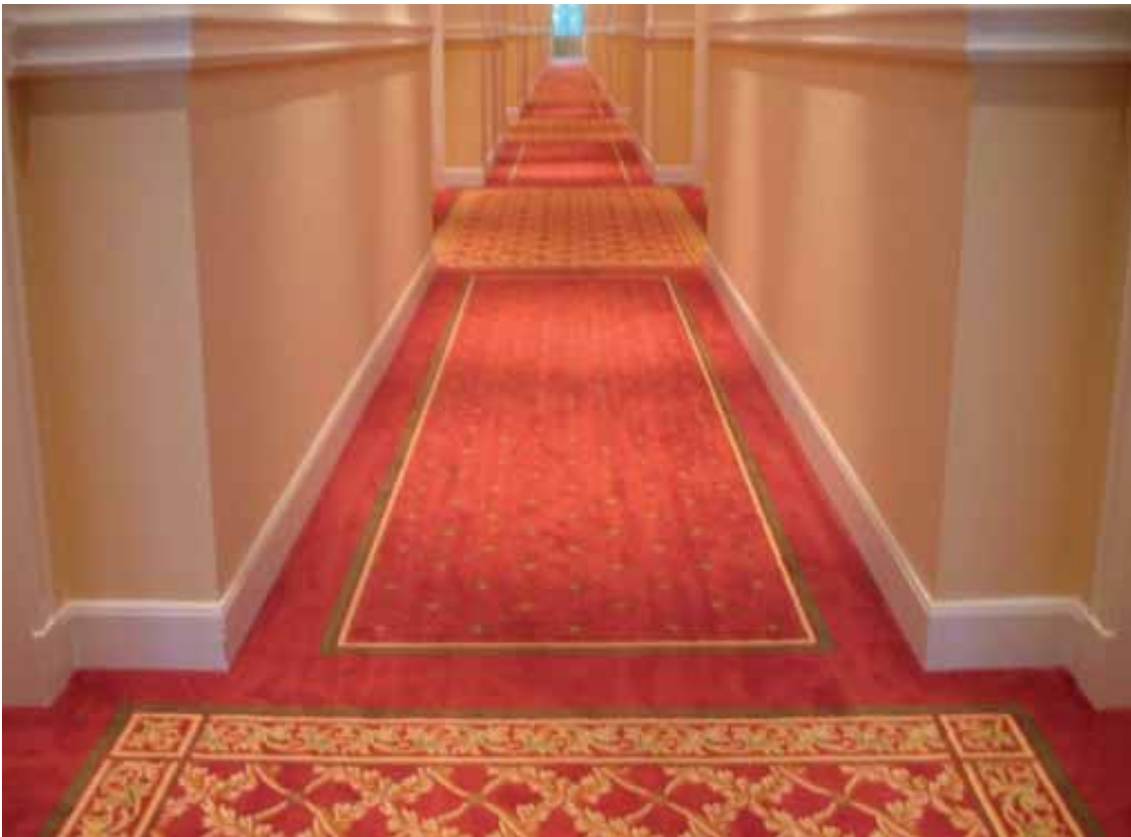
GRAND HOTEL DINO DI BAVENO  
Baveno (VB)



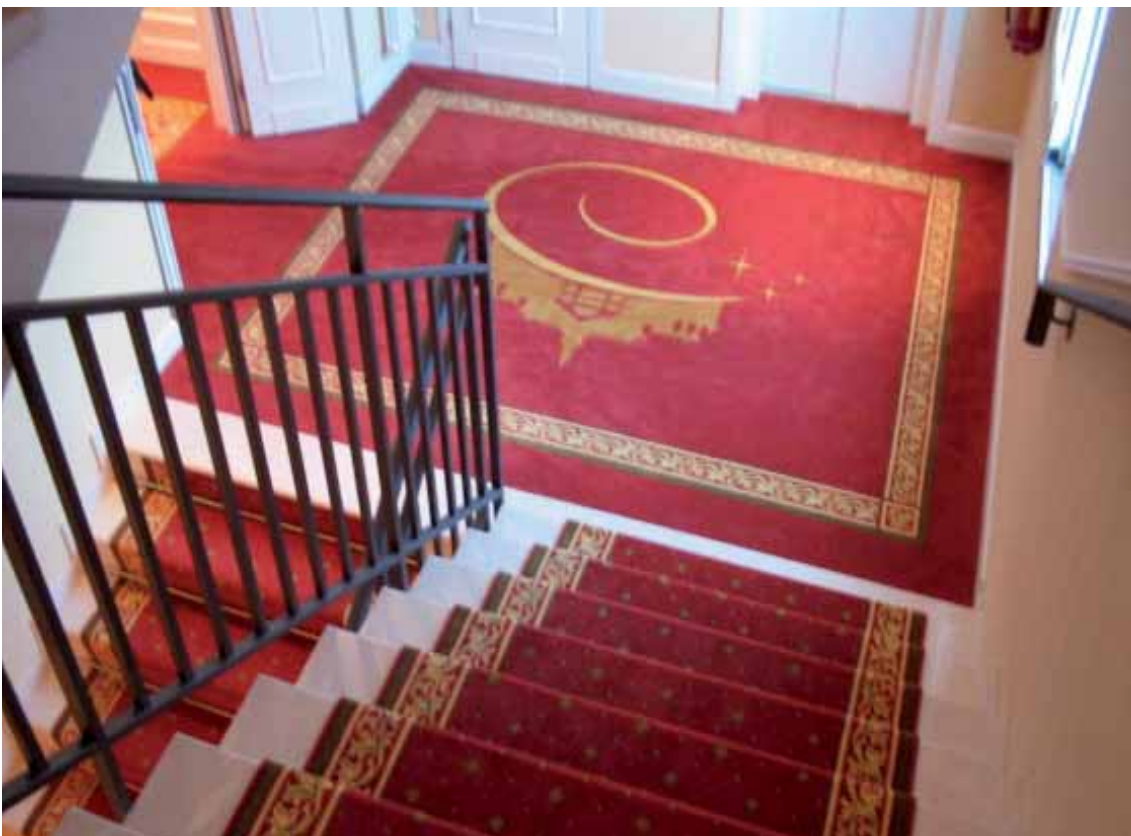
GRAND HOTEL DINO DI BAVENO  
Baveno (VB)







GARDALAND HOTEL RESORT  
Peschiera (VR)



GARDALAND HOTEL RESORT  
Peschiera (VR)

# References



VENTURA  
*P&O Cruises*



VENTURA  
*P&O Cruises*



HOTEL PRINCIPE DI SAVOIA  
Milano



HOTEL PRINCIPE DI SAVOIA  
Milano

# References







# References

CASTELLO GUNDEL  
*Budapest*

# References



GANDALF CASINÒ  
Ungheria



GANDALF CASINÒ  
Ungheria



*HOTEL CANTALUPA  
Brusaporto (BG)*



*HOTEL CANTALUPA  
Brusaporto (BG)*







*HOTEL GORSKI*  
*Polichno (Polonia)*



*HOTEL GOLEBIEWSKI*  
*Mikolajki (Polonia)*



*HOTEL PALACE SEMMERING  
Austria*



*HOTEL PALACE SEMMERING  
Austria*



Rezeption  
Kaffeehaus  
Salzkammer-Gast







RADICI PIETRO INDUSTRIES & BRANDS S.p.A.  
via Cav. Pietro Radici, 19  
24026 Cazzano S. Andrea (BG) Italy  
tel. + 39 035 724242 fax + 39 035 741549  
website: [www.radici.it](http://www.radici.it)